

w o r k i n g
p a p e r

21 11

**Export-Led Decay: The Trade Channel
in the Gold Standard Era**

Bernardo Candia and Mathieu Pedemonte



FEDERAL RESERVE BANK OF CLEVELAND

ISSN: 2573-7953

Working papers of the Federal Reserve Bank of Cleveland are preliminary materials circulated to stimulate discussion and critical comment on research in progress. They may not have been subject to the formal editorial review accorded official Federal Reserve Bank of Cleveland publications. The views expressed herein are solely those of the authors and do not necessarily reflect the views of the Federal Reserve Bank of Cleveland or the Board of Governors of the Federal Reserve System.

Working papers are available on the Cleveland Fed's website at:

www.clevelandfed.org/research.

Export-Led Decay: The Trade Channel in the Gold Standard Era
Bernardo Candia and Mathieu Pedemonte

Flexible exchange rates can facilitate price adjustments that buffer macroeconomic shocks. We test this hypothesis using adjustments to the gold standard during the Great Depression. Using prices at the goods level, we estimate exchange rate pass-through and find gains in competitiveness after a depreciation. Using novel monthly data on city-level economic activity, combined with employment composition and sectoral export data, we show that American exporting cities were significantly affected by changes in bilateral exchange rates. They were negatively impacted when the UK abandoned the gold standard in 1931 and benefited when the US left the gold standard in April 1933. We show that the gold standard deepened the Great Depression, and abandoning it was a key driver of the economic recovery.

Keywords: Exchange rate regime, currency unions, export-led growth, Great Depression, gold standard.

JEL: E32, F45, N12.

Suggested citation: Candia, Bernardo, and Mathieu Pedemonte. 2021. "Export-Led Decay: The Trade Channel in the Gold Standard Era." Federal Reserve Bank of Cleveland, Working Paper No. 2021-11. <https://doi.org/10.26509/frbc-wp-202111>.

Bernardo Candia is at the University of California-Berkeley. Mathieu Pedemonte is at the Federal Reserve Bank of Cleveland (mathieu.pedemontelavis@clev.frb.org). The authors thank Amber Sherman for excellent research assistance. They thank Tomas Breach, Chris Campos, José De Gregorio, Barry Eichengreen, Ezequiel Garcia-Lembergman, Yuriy Gorodnichenko, Ed Knotek, Carlos Rondon, Andrés Rodríguez-Clare, Raphael Schoenle, Roman Zarate, and seminar participants at UC-Berkeley and the Cleveland Fed for helpful comments and suggestions.

1 Introduction

Many countries have used some sort of fixed exchange rate in past decades. There is an extensive literature that justifies its use as a way to promote price and financial stability. A fixed exchange rate has been used in the form of unilateral pegs (i.e., Argentina in 1990s), monetary unions (Euro area), or a commitment to international monetary rules (gold standard). But its use can have negative implications in economic crisis, hindering the adjustment of relative prices and the associated external rebalancing, as Milton Friedman pointed out.¹ This paper shows that this happened in the US during the Great Depression. We show that the gold standard deepened the Great Depression, and leaving it significantly contributed to the economic recovery that started in 1933.

Using monthly data on economic activity at the city level in the 1930s, we show that cities that specialized more in exports were significantly affected by exchange rate appreciations, relative to cities that were less export oriented. We analyze events that occurred outside the US, but affected the US external sector. In particular, we study the large appreciation of the US dollar in 1931, when several countries, mainly the UK and Canada, abandoned the gold standard. Then we show that exporting cities exposed to the depreciation led the economic recovery that started in April 1933, when the US went off the gold standard, depreciating its currency.

We gather several data sets to document these facts. Using nominal and real measures of trade at the monthly level, we first document that US exports were particularly affected between October 1929 and March 1933. Then, using bilateral monthly exchange rates between the US and its trading partners, we construct a measure of an export weighted exchange rate. We show that after a stable exchange rate, the US experienced a large appreciation of its currency in August 1931, when Mexican Peso depreciated. One month later, the UK left the gold standard, followed by several countries that were tied to the British pound. We also document that the US experienced a significant depreciation relative to its trading partners in April 1933, when President

¹See [Friedman \(1953\)](#).

Franklin D. Roosevelt took the United States off the gold standard.

The gold standard limited the adjustment of the US dollar, which had an impact on the competitiveness of the external sector. We first study how changes in the exchange rate affect the terms of trade. Using prices for tradable goods in local currency for the US, the UK, Germany, and France, we estimate exchange rate pass-through into prices. We find an incomplete price pass-through of about -0.5 percent in foreign prices in the local currency after a 1 percent depreciation of the US dollar. This finding implies an increase in the foreign price relative to the local price of the tradable good: The local good becomes cheaper in the foreign market and the foreign good becomes more expensive in the local market, inducing expenditure switching. We also document a similar pattern for the main events that we evaluate: the UK abandoning the gold standard in 1931 and the US in 1933.

We then turn to evaluating the effect on economic activity. We construct a measure of trade exposure at the monthly and city levels; using census data, destination-sector specific exports from the US in 1928, and the monthly bilateral exchange rate of the US with 33 destinations. We measure exposure to trade at the city level as a weighted sum of sectoral trade exposures, where we weigh by the 1930 share of workers in a city and sector. To compute sectoral trade exposure, we calculate a sector-specific weighted exchange rate, where the weight on each destination's bilateral exchange rate is given by the sector's export share for that country. We aggregate over 45 exporting sectors, obtaining high cross-sectional and time variation across cities.

This measure contains two main components: First, as we consider employment share in the exporting sectors over total employment, the variable shows how specialized a city is in terms of overall exports. The exporting sector was particularly affected in the Great Depression, so it works in the same way as other measures of trade exposure, such as the one used in [Autor, Dorn, and Hanson \(2013\)](#). Second, that component sums over the sector-specific weighted exchange rates, which have variation according to country-specific movements, depending on how important they are

as a destination of US exports. Therefore, the measure interacts city-level export exposure with monthly variation coming from the exchange rate of countries that are more important sectoral destinations than others. Thanks to these features, we can control for time fixed effects, exploiting the cross-sectional variation and differential exposure to exchange rate shocks.

Using this measure, we show that cities with average trade exposure increased their economic activity by 0.76 percent after a 1 percent city-specific depreciation, after controlling for common state variation. We start with the events of August and September 1931, when Mexican Peso devalued and the UK left the gold standard, depreciating the British pound relative to the US dollar. All of these events produced an appreciation of the US dollar of more than 15 percent relative to their trading partners. We show that following a common pre-trend, cities with higher trade exposure exhibited an important drop in economic activity relative to non-exposed cities. The average exposed city reduced its level of economic activity by 10 percent, relative to a non exposed city by the end of the first half of 1932. We document that this drop accounts directly for over one-sixth of the drop in economic activity that the US experienced between 1931 and 1932, the deepest trough of the Great Depression.

After measuring the importance of exchange rate movements for the external sector in the US, we explore the depreciation of 1933. US economic activity started to increase after President Roosevelt's inauguration. We show that starting in April 1933, cities exposed to exports to destinations whose currencies the US dollar depreciated the most in 1933 increased their economic activity more rapidly than cities with lower exposure. The growth of the average exposed city accounts for almost all of the increase in economic activity by the end of 1933 and accounted for around three-fifths of economic activity one year after the US abandoned the gold standard. These results suggest that a flexible exchange rate plays an important role in buffering macroeconomic shocks.

The gold standard and fixed exchange rates continue to be of interest, both in the US and abroad. [Diercks, Rawls, and Sims \(2020\)](#) show that such a monetary regime

in the context of a closed economy would have decreased welfare and produced more instability in the last 20 years due to the volatility of the price of gold. In this paper, we do not focus on the domestic money supply, but on the implications of the exchange rate regime. Along those lines, [Obstfeld, Ostry, and Qureshi \(2019\)](#) find that fixed exchange rate regimes magnify global financial shocks. The implications of the exchange rate regimes can be larger due to the increased vulnerability of countries to the global financial cycle, as shown by [Miranda-Agrippino and Rey \(2020\)](#) and in a context where most countries remain somewhat pegged to other currencies, in particular the US dollar, as shown by [Ilzetki, Reinhart, and Rogoff \(2019\)](#). In this paper, we show that the trading sector would also be affected by that vulnerability.

On the economic history side, many theories try to explain why March 1933 marks a turning point in economic activity in the US, reflecting the fact that several policies were implemented at that time ([Romer \(1992\)](#), [Eggertsson \(2008\)](#), [Hausman, Rhode, and Wieland \(2019\)](#), [Jalil and Rua \(2016\)](#), [Jacobson, Leeper, and Preston \(2019\)](#), among others).² [Eichengreen and Sachs \(1985\)](#), [Campa \(1990\)](#), and [Bernanke \(1995\)](#) have shown that countries that left the it standard recovered faster than countries that remained on gold. There are many mechanisms linking currency depreciation and recovery.³ In this paper we focus on large exchange rate fluctuations and their impact on the level of economic activity through changes in the competitiveness of exports. We first test this mechanism using the large appreciation of the US dollar in 1931, when the UK and other trading partners abandoned the gold standard. This shock was unanticipated and, consequently, was perceived as exogenous. Then, we focus on the role that

²That month Roosevelt began his first term. He immediately implemented a battery of policies during a period called the “Hundred Days.”

³Abandoning the gold standard gave central banks and governments more leeway to stabilize the banking system, whose instability was the main source of monetary contraction in the United States ([Bernanke \(1995\)](#)). Devaluation raises final product prices lowering real production costs. All of the above mechanisms helped remove expectations of deflation, which is especially useful when nominal interest rates are stuck at the zero lower bound. On the other side, [Bordo and Meissner \(2020\)](#) show that currency issue of debt was an important consideration for countries in maintaining fixed exchange rate and avoiding an increase in their debt burden.

the depreciation of the US dollar played in the recovery of 1933.⁴

[Hausman, Rhode, and Wieland \(2019\)](#), focusing on the farm sector, show that an indebted farm sector led the recovery. They claim that the unexpected debt deflation produced by the depreciation of 1933 created a redistribution to sectors with a higher marginal propensity to consume. In this paper, we focus on the whole exporting sector of the US, showing that the paths of the decay and recovery are also present, for example, in the manufacturing sector. The depreciation not only produced inflation, but also an actual increase in the real income of the exporting sector relative to the nontradable sector and its nontradable costs (wages). This real income growth can explain the increase in spending in the tradable cities. Moreover, we show that exporting sectors were particularly affected by the events of 1931, which can explain why the farm sector had relatively higher debt by March 1933.

We contribute to this literature by providing a clearer identification strategy, by exploiting cross sectional variation within the US and testing the main effects in periods with exogenous shocks. The exposure measure built for this paper, which has city- and time-specific variation, and the large and monthly panel of cities' economic activity allow us to control for common time effects in the US and evaluate relative differences in a very short window. This setting provides a clean identification relative to the other evidence of the events of the Great Depression. We show that fluctuations in the exchange rate were key not only for deepening the crisis but also for exiting it. We also show that this mechanism was relevant before the events of April 1933. We call this mechanism the trade channel.

This paper is also closely related to the literature on the role of the exchange rate in economic growth. [Rodrik \(2008\)](#) argues that a depreciated exchange rate promotes economic growth. [Levy-Yeyati and Sturzenegger \(2003\)](#) find that flexible exchange rates are associated with higher economic growth, while [Lopez-Cordova and Meissner \(2003\)](#) find that fixed exchange rates promote trade, in the context of the early gold

⁴Although the depreciation of the dollar in this case cannot be considered an exogenous shock.

standard. In the short run, currency changes can have an effect on economic activity in the presence of market power and other rigidities, as explained by [Dornbusch \(1987\)](#). The conditions discussed in that paper are met in an open economy New Keynesian model, where a key variable in evaluating the effect of exchange rate movements is the price pass-through. Many papers have empirically estimated exchange rate pass-through in different periods of time. [Feenstra \(1989\)](#) and [Knetter \(1989\)](#) are examples of early empirical work that continued later. [Goldberg and Knetter \(1997\)](#) summarized those and other early works. This debate continued adding other considerations such as the currency of invoicing as discussed and estimated in [Gopinath, Itskhoki, and Rigobon \(2010\)](#) and [Auer, Burstein, and Lein \(2021\)](#). We add to this discussion by also estimating the exchange rate pass-through in Section 3 using large changes in the exchange rate due to changes in regime. We find results similar to the one discussed in [Goldberg and Knetter \(1997\)](#) and find heterogeneity in tradability as in [Burstein, Eichenbaum, and Rebelo \(2005\)](#).

Finally, we also add to the literature on the costs of fixed exchange rates, especially when local shocks occur. For example, [Obstfeld and Rogoff \(1995\)](#) discuss that when there is a shock that affects demand for local goods (namely, a productivity shock that affects the terms of trade, or some shock abroad that reduces the demand for local goods), a fixed exchange rate will damage the local economy, since local producers' prices will not be able to adjust. This is exacerbated by a restricted monetary authority. An alternative is to abandon the peg, which is more likely to occur when a negative export shock happens, as found by [Mitchener and Pina \(2020\)](#). These arguments have been used to analyze the Latin American crisis in the 1980s and the Euro crisis in 2009. In both cases, there have been discussions about the role of fixed exchange rate in deepening the crisis. [Eichengreen et al. \(2014\)](#) discuss the similarities between both cases and the role of external adjustment (in particular with fiscal instruments constrained). This paper shows that this is the case using detailed micro-level data.

This paper is organized as follows. In Section 2 we document the trade and ex-

change rate dynamics during the Great Depression. In Section 3 we examine the connection between trade exposure and price adjustment. In Section 4 we focus on local exposure and economic activity. In Section 5, we show robustness results. Section 6 concludes.

2 The Trade Channel

The US dollar experienced a large depreciation in March 1933. After years on the gold standard, the US abandoned it days after President Roosevelt’s inauguration. The gold standard was configured as an international system, where the exchange rate was fixed between the economies that participated (Eichengreen (1996)).

As stated by Bernanke (1995), understanding the Great Depression is the Holy Grail of macroeconomics. Eichengreen and Sachs (1985) argue that the length and depth of the Great Depression and the recovery from it can be explained by the fixed exchange rate regime. Under this type of regime, local shocks have long and profound effects on economic activity due to the lack of adjustment of the external sector. The flexible exchange rate, on the other hand, enables price adjustment, which reduces the decline in competitiveness.⁵ In this paper, we evaluate this mechanism empirically using novel micro data. We complement Eichengreen and Sachs (1985) evidence by exploiting cross-sectional variation in the US. This cross-sectional variation comes from novel data on high-frequency economic activity, bilateral international trade indicators, and census data. This variation allows us to control for common shocks across the US in a given period of time and identify the contribution of the mechanism.

We start by showing some stylized facts in this section. We construct a measure of the export-weighted exchange rate for the US. The US was not the first country to abandon the gold standard. Mexico abandoned it in August 1931 after the monetary reforms called “Plan Calles,” the UK left in September 1931,⁶ and other countries had

⁵In Appendix A.2, we show that this is likely in the context of an open economy New Keynesian model. In the model, we show that a change in regime produces a faster recovery.

⁶Farhi and Maggiori (2018) argue that the exit of the UK, and the consequential devaluation of the

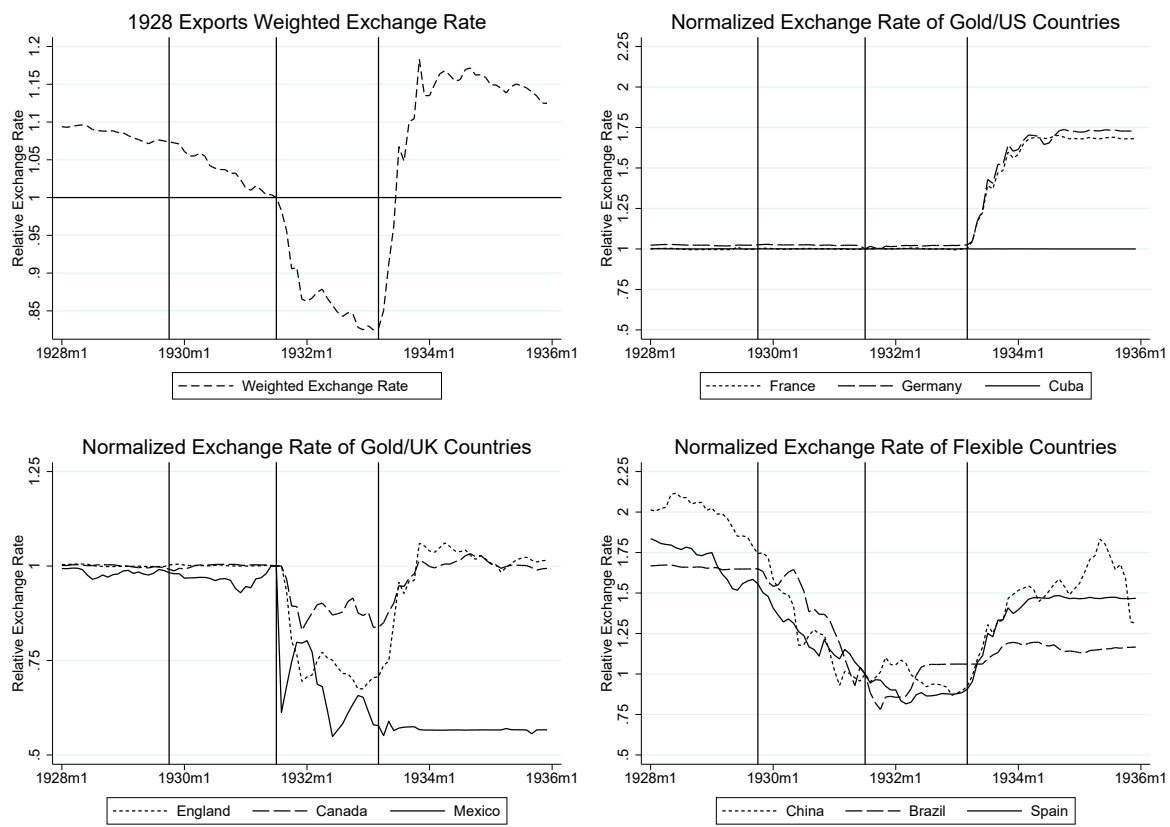
had flexible regimes since the beginning of the Great Depression. This variation generates many exchange rate shocks depending on the exposure of exporting sectors to those countries. The objective of this measure is to have a general idea of the main changes in the exchange rate that the US experienced during the Great Depression. To construct this measure, we obtain bilateral exchange rates at the monthly level for 33 countries representing 86.6 percent of total US trade with foreign countries in 1928.⁷ We define the exchange rate as the US dollar over the foreign currency, so an increase of the indicator represents a depreciation of the US dollar. We normalize the exchange rate of each country to July 1931 (equal to 1). Then, we take the share over the total exports of the sample of each country's US imports and construct a weighted average exchange rate with those shares.⁸ Figure 1 shows the evolution of this export-weighted exchange rate and the normalized bilateral exchange rate for some particular countries.

sterling were due to stabilizing needs in line with the Triffin dilemma (Triffin (1961)). This need was explained by the high fiscal imbalances and the banking losses that followed the German financial crisis.

⁷From the Federal Reserve Bulletins. We obtain data for Austria, Belgium, Bulgaria, Czechoslovakia, Denmark, the UK, Finland, France, Germany, Greece, Hungary, Italy, the Netherlands, Norway, Poland, Portugal, Romania, Spain, Sweden, Switzerland, Yugoslavia, Canada, Cuba, Mexico, Argentina, Brazil, Chile, Colombia, Uruguay, China, Hong Kong, India, and Japan

⁸Solomou and Vartis (2005) use a similar strategy for the UK.

Figure 1: End of Gold Standard and Exchange Rates



Notes: The upper left panel shows the weighted nominal exchange rate for the US. This measure is constructed by calculating the share of US exports in 1928 to 33 economies that represent 86.6 percent of total exports that year. Each bilateral exchange rate is normalized to one in July 1931 and we construct a weighted average, where the weights are export shares. The upper right panel, lower left and lower right represent the bilateral nominal exchange rate between the US and selected countries as indicated in each panel. Each bilateral exchange rate is normalized to 1 in July 1931. Vertical lines indicate October 1929, August 1931, and March 1933. The exchange rate is defined as the US dollar over the foreign currency.

The upper left panel of Figure 1 shows that the weighted exchange rate of the US had been slowly appreciating since 1928. This is mainly due to countries that did not have a fixed exchange rate with the US, such as China (2.7 percent of total exports in 1928), Brazil (2 percent) and Spain (1.7 percent), as shown in the lower right panel. In August 1931 we can see a large appreciation of the US dollar relative to its trading part-

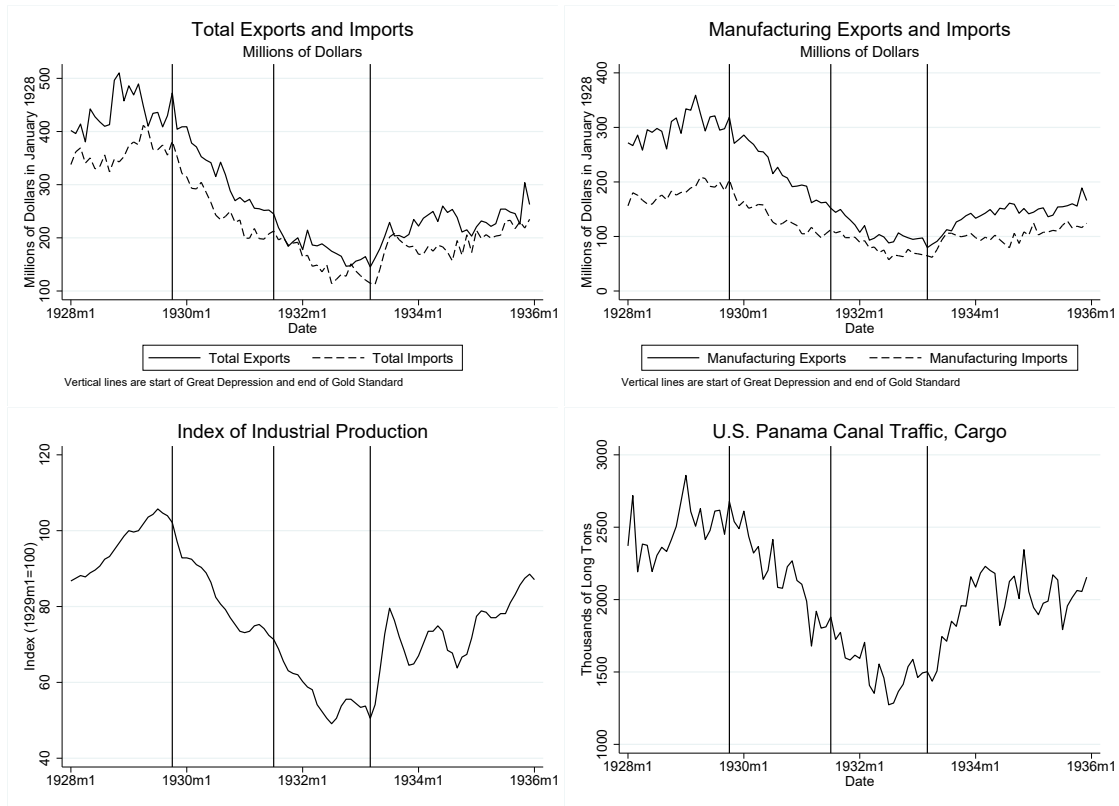
ners. Mexico (2.6 percent) had a large depreciation of its currency that year as seen in the lower left panel. Then, the most important trade partners of the US -Canada (17.1 percent of total exports in 1928), the UK (16.6 percent) and the countries tied to the British pound- also depreciated their currencies. Other countries remained tied to the gold, such as Germany (9.1 percent), France (4.7 percent), and Cuba (2.5 percent), so the exchange rate with these countries was not affected in 1931, as seen in the upper right panel. Then, when the US abandoned the gold standard, the US dollar experienced a large depreciation. This was produced by a depreciation relative to the countries that were not tied to gold, such as Canada and the UK, but also relative to the countries that remained on the gold standard, such as France and Germany. Some few countries, such as Cuba, remained tied to the US dollar.

Figure 2 shows that following these main events, measures of trade also reacted. Exports and quantities of exports decreased sharply during the Great Depression. Panels 1, 2 and 4, show that after the depreciation, exports experienced an increase as measured by value and volume. This trend coincided with the evolution of industrial production, which also strongly increased starting in April 1933, as shown in panel 3 of Figure 2.

These figures also show that the Great Depression was characterized by a large drop in exports. The US was not able to gain competitiveness using its currency. This situation was exacerbated when the UK and other economies tied to the British pound depreciated their currencies in 1931. Before October 1929, exports were slowly growing according to many measures, as well as economic activity. The gold standard worked in a cooperative way until 1928 (Eichengreen (1996)), but as October 1929 approached, that cooperation ended, producing a tightening of the money supply that increased the effects of the great crash.⁹ During the years of the depression, real exports dropped almost 70 percent while industrial production dropped by a similar magnitude.

⁹Bernanke (1995) argues that the largest factor behind the monetary contraction in the US was the instability of the banking sector, while the collapse of the gold standard dominated outside the US.

Figure 2: End of Gold Standard and Trade



Notes: The upper left panel (panel 1) is the seasonally adjusted total exports in millions of dollars normalized by the CPI (base January 2008). The data come from the NBER Macroeconomy Database. The upper right panel (2) is the seasonally adjusted total exports in manufacturing in millions of dollar normalized by the CPI (base January 2008). The data come from the NBER Macroeconomy Database. The lower left panel (3) shows monthly industrial production, normalized to January 1929 (100). The data come from the Fed’s G.17 Industrial Production and Capacity Utilization. The lower right panel (4) is the seasonally adjusted long tons of US cargo in the Panama Canal from the Panama Canal Record, available in the NBER Macroeconomy Database. Each bilateral exchange rate is normalized to 1 in July 1931. Vertical lines indicate October 1929, August 1931, and March 1933.

Depreciation lowers the price of American goods in terms of foreign currency, enhancing the competitiveness of exports. By March 1933, US exports reached their lowest value since 1929. The manufacturing sector (66 percent of total exports in September 1929) was particularly hard hit. In March 1933, manufacturing exports in real terms were 73 percent lower than in September 1929. Exports of crude materials (32.5 percent

of exports in September 1929) decreased 50 percent. By March 1934, manufacturing exports were 85 percent higher, while crude materials were 50 percent higher than one year before. After that low point in March 1933, the value of exports grew by 75.21 percent over the next six months. This effect was not only caused for by rising prices. By April 1934, the weight of US cargo in the Panama Canal was 53.3 percent higher than in April 1933.

Relevant economic stakeholders at the time suggested that the volume of trade could have been even much greater after the United States went off the gold standard. The expansion of exports was hindered by the instability of the dollar. With the dollar falling in value, it was convenient for foreign importers to delay purchases of American goods in anticipation of further depreciation. [Patch \(1934\)](#), quoting a speech made in December 1933 by the head of the Foreign Credit Interchange Bureau of the National Association of Credit Men, William S. Swingle, reveals the thinking of the time:

An imposing backlog of orders is piling up abroad while customers for American products wait for the dollar to settle to a permanent level. They refuse to make advance commitments for fear competitors will be able to buy similar goods at a more favorable price later. A desire to profit by exchange is also having an effect upon collections in many foreign markets. Payments for shipments are being delayed in the hope that the dollar will be lower when the final settlement for goods purchased is made.

According to him, foreign purchasers avoided making long-term commitments in the hope of receiving more American goods for the same amount of money. [Patch \(1934\)](#), now quoting the secretary of the Export Managers Club of New York, said: “Foreigners are buying more goods, but their purchases are made up of small orders placed at frequent intervals and represent no long-time commitments.”

Depreciation also increases the price of imports of the depreciated currency, which would discourage the demand for foreign goods. However, after the United States abandoned the gold standard in the spring of 1933, the value of imports (seasonally adjusted) grew without interruption until August 1933, accumulating a growth of 84.6

percent as shown in Figure 2. The initial increase in imports is consistent with the empirical evidence provided in [Blaum \(2019\)](#), who shows that large devaluations are characterized by an increase in the aggregate share of imported inputs and by the reallocation of resources toward import-intensive firms, because large exporters are also large importers ([Amiti, Itskhoki, and Konings \(2014\)](#), [Bernard et al. \(2007\)](#), and [Albornoz and García-Lembergman \(2020\)](#)).¹⁰ The effect on net exports is ambiguous.¹¹ This narrative and the quantitative evidence show that the external sector expanded starting in April 1933.

The opposite mechanism occurred when other countries abandoned the gold standard. When the UK left the gold standard in September 1931, newspapers at the time warned about the consequences for the US export sector. The New York Times, for example, highlighted the potential gains for the UK, expecting an increase in England's exports while increasing American imports. The Times considered that the US would experience "a temporary reduction in the standard of living." The article was optimistic about an increase in the UK's demand for US raw materials, which can explain why crude material exports did not decline as much as manufacturing exports during the Great Depression. This optimism did not last long: On October 4, the same newspaper documented that American cotton exports were stagnant. The paper attributed this situation to the "decline in sterling values," describing a "steady decline in prices." The article highlighted that it did not know when the price decline was going to stop.

We turn now to estimating the exchange rate mechanism empirically. In the next section, we evaluate changes in competitiveness due to changes in the exchange rate during the Great Depression. With this we can account for changes in the terms of trade

¹⁰[Patch \(1934\)](#) argues that the initial growth in imports was due to the sharp increase in industrial activity and the need for replenishing stocks of raw materials. With the dollar falling in value, it was convenient for importers to accumulate large stocks of foreign products in anticipation of further depreciation of the dollar. According to this author, the loss of purchasing power of the US dollar became an obstacle for importers by July 1933, as reflected in the decline of the year-over-year growth rate of imports, while the export growth rate increased progressively after August 1933.

¹¹The increase in net exports is related to the elasticity of substitution between the local and foreign variety. We show and discuss this point in [Appendix A.2](#).

to see if we should expect benefits for the external sector. Then, we measure the effect on economic activity, comparing the economic performance of more export-oriented cities relative to less export oriented cities.

3 Competitiveness Effect of Changes in Exchange Rate

We start by studying whether changes in exchange rates had an effect on prices. The amount of pass-through is relevant for understanding the gain in competitiveness for local producers. For example, if the US dollar depreciates by 1 percent, and at the same time the prices of American products in the UK decrease by 1 percent, US producers will receive the same revenue from any foreign sales. Pass-through of less than 1 percent will imply some gains in competitiveness for the US producer, as she will receive more local currency for the same product.

In order to have incomplete pass-through in economics models, many works, such as [Atkeson and Burstein \(2008\)](#), have focused on variable markups. Incomplete pass-through can also be achieved in a New Keynesian model with sticky prices and some level of substitution between varieties as in [Monacelli \(2005\)](#).¹² In Appendix [A.2](#) we show that after a negative local shock, the external sector of the domestic country loses competitiveness through an increase in the price of the tradable good produced domestically relative to the price of the same good produced abroad. On the other hand, under the flexible regime, the exchange rate buffers the loss of competitiveness, mitigating the negative impact of the shock. Consequently, under a fixed exchange rate, the recession is deeper and longer lasting.

For this reason we start estimating exchange rate pass-through, in order to evaluate the extent of the gains in competitiveness. For this, we gather prices at the individual goods level for the US, the UK, France and Germany. We do not have data for all of the goods and all of these countries, but we do have data for all of the products at least in

¹²The market conditions to achieve that results were proposed in [Dornbusch \(1987\)](#)

the US.¹³ We use monthly data from 1928 to 1934 for most products.¹⁴ Then, we run the following regression to see the effect of the exchange rate on prices:

$$\Delta Prices_{c,j,t} = \beta \Delta Exchange_Rate_{c,t} + \gamma_{j,c} + \theta_{j,t} + \varepsilon_{c,j,t}, \quad (1)$$

where $Prices_{c,j,t}$ is the log of the price of the good j in country c at time t . $Exchange_Rate_{c,t}$ is the log bilateral exchange rate (US/c) with respect to country c at time t . We also add a country-product fixed effect ($\gamma_{j,c}$) to control for the unit of the good, so we do not have to worry if the price of the product is in pounds or kilograms, for example, and a product-time fixed effect ($\theta_{j,t}$) that controls for any general effect on prices and also for any product-specific shock or seasonality. Standard errors are clustered at the product-country level and at the time level.

In addition to this regression, we can see whether more tradable products have a higher or lower pass-through. Every good has some tradable and nontradable component, so we expect that β should be significant for all of the goods, but we expect that the effect should be more pronounced for goods that have a higher tradable component.¹⁵ Table 1 shows the results for the regression just mentioned.

¹³The products are bread (France and US), butter (UK and US), cattle (UK and US), copper (Germany and US), cotton yarn (Germany and US), eggs (UK and US), hides (Germany and US), hogs (Germany, UK and US), milk (UK and US), oats (UK and US), pig iron (France, Germany, UK and US), potatoes (UK and US), poultry (UK and US) and wheat (France, Germany, UK and US).

¹⁴Data for pig iron not available for the UK in 1934, and data for wheat are available until November 1934 for the UK and June 1934 for France

¹⁵We classify as tradable goods copper, cotton yarn, hides, oats, pig iron, potatoes and wheat

Table 1: Effect of Exchange Rate Changes on Prices

	(1)	(2)	(3)	(4)
Exchange Rate (log changes)	-0.500*** (0.104)	-0.522*** (0.119)	-0.507*** (0.127)	-0.232** (0.105)
Exchange Rate*Tradable		0.044 (0.116)		-0.543** (0.236)
Country-Product FE	Yes	Yes	Yes	Yes
Time FE	Yes	Yes	-	-
Product-Time FE	No	No	Yes	Yes
Observations	2,719	2,719	2,719	2,719
R-squared	0.071	0.071	0.590	0.592

Notes: The table shows the results of specification 1. The dependent variable is the change in log of prices. The exchange rate is the change in logs of the exchange rate, measured as US dollars over one unit of local currency (1 for the US). Tradable is a dummy equal to 1 for tradable goods. Clusters are at the product-country level and at the time level. *** $p < 0.01$, ** $p < 0.05$, * $p < 0.1$

We can see that the pass-through is not complete, which indicates a gain in competitiveness. For example, after a 1 percent depreciation of the British pound, prices in the UK are around 0.5 percent more expensive in pounds, meaning that those prices, when converted to US dollars, are 0.5 percent cheaper for American consumers. This effect is consistent over all the specifications. Consistent with [Burstein, Eichenbaum, and Rebelo \(2005\)](#), we find higher pass-through for tradable goods as shown in column (4). This means that even within the country, the effect shows that there are gains in competitiveness in tradable goods. The average coefficient is in line with those found in [Goldberg and Knetter \(1997\)](#) and [Burstein and Gopinath \(2014\)](#). For tradable goods the coefficient is close to 0.8. This is a high pass-through, but close to and relatively smaller than the one found by [Gopinath, Itskhoki, and Rigobon \(2010\)](#) for non dollar invoiced goods and [Auer, Burstein, and Lein \(2021\)](#) for euro invoiced goods.

In addition to this result, we explore what happened during two important events during the Great Depression. The first event occurred in September 1931, when the UK left the gold standard, producing an appreciation of the US dollar of more than 25 percent relative to the British pound between September and December 1931, as shown in

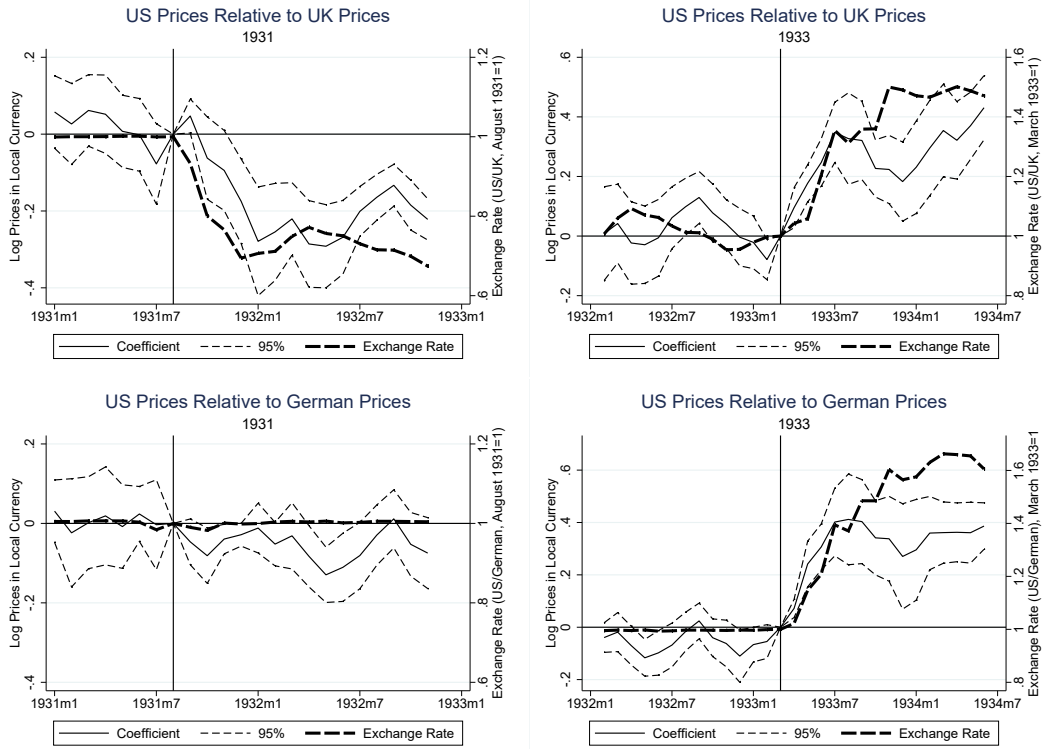
Figure 1. This shock is relatively exogenous from the US point of view. There is no evidence of changes in price expectations during that time (Binder (2016)). So, it is likely that the policy conducted in the UK was not related to prices in the US. This consideration will be more important when we discuss the results in terms of economic activity.

The second event occurred in April 1933, when the US left the gold standard. In this exercise, we only use product prices between two countries and their bilateral exchange rate. We evaluate the effect of these events through the time series, exploring the cross-sectional differences in prices in each period of time. We perform this exercise between the US and the UK. For comparison, we also perform this exercise between the US and Germany. The bilateral exchange rate between the US and Germany did not change in 1931, so we should not see an effect that year. In 1933, the US dollar also depreciated relative to the German mark, so we expect to see an effect around that event of US prices relative to both British and German prices. We run the following regression:

$$Prices_{c,j,t} = \beta^t \times US_c \times \gamma_t + \gamma_{j,c} + \varepsilon_{c,j,t}, \quad (2)$$

where US_c is a dummy equal to 1 if the country is the US and γ_t is a time dummy. The rest of the variables are the same as in the previous equation. We explore the effect for both events of 1931 and 1933 and show the results for all of the time series to test pre-trends and how persistent these effects are. Figure 3 shows the results.

Figure 3: Exchange Rate and Price Reaction after Gold Standard



Notes: The figure represents results from regression (2). The left panels represent results when the UK abandoned the gold standard in September 1931 and the right panels represent the event when the US left the gold standard in April 1933. The top two panels represent results of equation (2) for the US and the UK and the bottom two panels represent results of equation (2) for the US and Germany. The solid line represents the coefficient of the regression (β^t) for each period of time, which shows the reaction of US prices relative to the other economy. The light-dashed line represents confidence intervals at the 95 percent level. Standard errors have two-way clusters at the product-country level and at the time level. The dark-dashed line represents the bilateral exchange rate.

The figure shows a similar pattern compared with the general regression in Table 1. After the UK left the gold standard, US prices declined relative to UK prices at a lower rate than the appreciation of the US dollar, implying a reduction in the competitiveness of the US relative to the UK. The opposite effect occurred in 1933. After the US went off the gold standard, US prices increased relative to UK prices at a lower rate than the depreciation of the US dollar, implying a gain in the competitiveness of the US relative

to the UK. These changes are large. By August 1932, prices in the US were 16 percent lower than in the UK. This effect is the result of a 28 percent appreciation of the US dollar. A similar effect was produced over the same period of time (one year), but in 1933. US prices in March 1934 were 35 percent higher than in March 1933, after a 48 percent depreciation of the US dollar.

Relative prices between the US and Germany were less affected by the UK's departure from the gold standard. The results show only a mild reduction in bilateral prices around this event.¹⁶ This shows that the change in prices did not come from some specific change in the US relative to all the other countries. In 1933, the change in relative prices between the US and Germany is similar to the change in relative prices between the US and UK.¹⁷

The results found in this section are consistent with an incomplete pass-through. This incomplete pass-through is present around the main events that we analyze in this paper as well. From the price results, the implication is that exporters gained competitiveness in 1933, but the ones exposed to the UK in 1931 lost competitiveness. In the next section, using detailed cross-sectional variation in the US, we evaluate whether changes in competitiveness had an impact on the level of economic activity

4 Local Effect of Exchange Rate Changes on Economic Activity

We evaluate the effect on local economic activity. We use data on bank debits for more than 200 cities available on a weekly basis. As shown in [Pedemonte \(2020\)](#), this measure strongly correlates with measures of spending on durable goods. This mea-

¹⁶According to [Gopinath et al. \(2020\)](#) pass-through of import prices should be driven by changes in the dominant currency. [Eichengreen and Flandreau \(2009\)](#) using data from [Nurkse \(1944\)](#) show that up to the 1930s the pound was still the dominant currency, but the US was also an important source of currency reserves. The British pound has been a more dominant currency for the United States than for Germany can explain why prices in the US might have declined slightly relative to the prices in Germany following the depreciation of the British pound. In any case, these relative changes are small.

¹⁷Note that this result is consistent with the British pound as a dominant currency.

sure highly predicts measures of economic activity, such as car spending, department store sales, industrial production and business activity, at the state, federal reserve district and national level on a monthly basis (see Appendix A.1, Tables A.1 and A.2). We aggregate these data to a monthly frequency and seasonally adjust the series.¹⁸ This is relevant, since we are going to control for the economic characteristics of the cities, which can have important seasonal fluctuations, in particular in sectors such as agriculture.

We construct a measure of the exposure to changes in the exchange rate at the city level. In order to do this, we combine country sector-specific exports for the US in 1928, the bilateral exchange rate from 1928 to 1935, and city-level sectoral employment shares from the census of 1930 (Ruggles et al. (2021)). With this information, we construct a time-varying indicator that combines the specific exposure of a city to a country, through its economic specialization and get the variation over time through fluctuations in the bilateral exchange rate. Specifically, we construct the following measure of exposure:

$$Exposure_Trade_{c,t} = \sum_s Sh_W_{s,c,1930} \sum_d Sh_Ex_{s,d,1928} \times RER_{d,t}, \quad (3)$$

where c indexes cities and t indexes dates. $Sh_W_{s,c,1930}$ represents the share of workers in sector s in city c according to the census of 1930. $Sh_Ex_{s,d,1928}$ is the sector's export share going to destination d and $RER_{d,t}$ is the relative bilateral nominal exchange rate of the US relative to destination d normalized to 1 in July 1931.

In order to combine the census industrial employment data with the sectoral trade information, we make a correspondence between both sources of information as described in Table A.3 in Appendix A.1. We have 45 sectors that represent US merchandise exports to 33 destinations. This information gives enough variation in terms of the

¹⁸We take logs and run a regression with city-month fixed effects. Then, we obtain the residual of the regression.

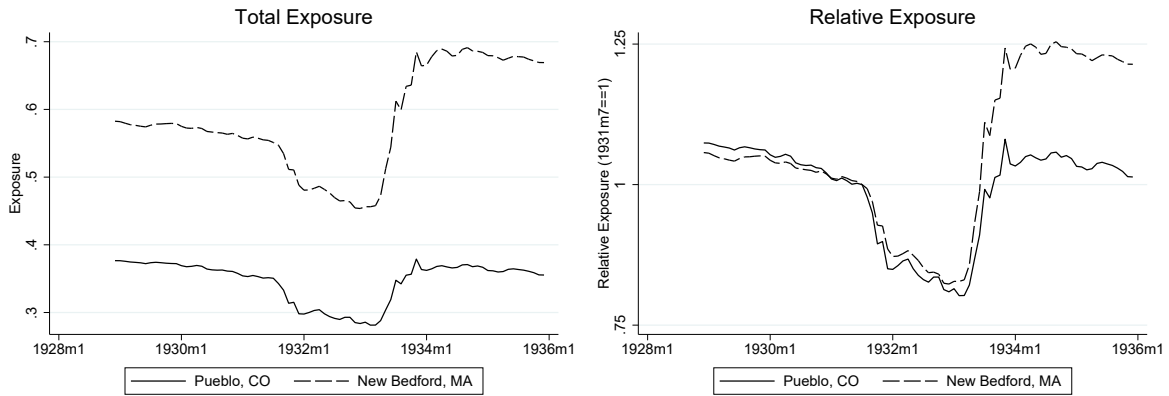
exposure to trade to different destinations. While Canada and the UK were the main trading partners of the US, Japan, for example, dominated in forestry and fertilizers. Mexico dominated in explosives and firearms, the Netherlands in precious stones and Germany in cotton. Also, while iron ore went mainly to Canada and the UK, only 12 percent of explosives and firearms went there in our sample. This variation gives us exposure to different exchange rate regimes and shocks.

$Exposure_Trade_{c,t}$ incorporates the variation at the city level and across time. Considering the cross-sectional variation, the average value for each city shows how exposed to trade a city is relative to other cities. But it also incorporates the variation that is relevant given the exchange rate dynamics present in the Great Depression. For example, China had a flexible exchange rate with the US. This means that cities exposed to a sector where China is an important destination were losing competitiveness since the beginning of the Great Depression, but if those cities were not exposed to sectors where the UK or pound-tied countries were important, the appreciation of 1931 should have not been so relevant for those cities. At the same time, cities more exposed to France or Germany should benefit relatively more from the depreciation of 1933. This is also a direct measure of exposure, since it does not consider the exposure of the destination to other countries, through the same sector.

In order to illustrate the characteristics of this measure, we take two cities as examples: Pueblo, CO, and New Bedford, MA. Pueblo is an inland city, with geographical conditions less favorable to international trade. Surprisingly, this city had the median allocation of labor to exporting sectors according to our sample: 35.3 percent of its working population. This city had the main plant of the Colorado Fuel and Iron Company, an important steel conglomerate. Eighteen percent of the labor force of Pueblo worked in the steel manufacturing sector. The main destination of this sector's product was Canada, with 44 percent of the total exports in our sample and then Japan, with 18 percent. On the other hand, New Bedford was a city open to international trade. Located in the coast of Massachusetts, the city had direct access to the Atlantic. This could

explain why 55 percent of the city’s labor force worked in the exporting sector. They specialized in textiles, another important exporting sector of the US. Forty-two percent of its working population was employed in the cotton sector, distributed among several cotton mills in the city. The main destination of the semi-manufactured cotton products was Germany (25 percent of all the exports in our sample) and the UK (24 percent). These characteristics of the employment of the cities exposed them to different shocks. We show the measure of exposure for both cities in the left panel of Figure 4 and the exposure relative to the city’s value in July 1931 in the right panel.

Figure 4: Exposure Measure for Selected cities



Notes: The figure shows the value of the variable from equation 3 for Pueblo, Colorado, and New Bedford, Massachusetts. The left panel shows the raw measure and the right panel shows the same measure, but relative to the city value in July 1931.

The left panel of Figure 4 shows that the measure is lower for Pueblo compared to New Bedford. This reflects the fact that Pueblo had a smaller fraction of its population working in the export sector. The right panel shows the same index normalized to 1 in July 1931. We can see that until July 1931, there were no changes in the relative exposure of both cities. This is because both cities were exposed to countries that had a fixed exchange rate with the US up to 1931. Then, we can see that since April 1933, the New Bedford exposure increases relative to the Pueblo exposure. This is because there were

no significant changes in the bilateral exchange rate with Japan, while the US dollar depreciated sharply against the German mark. Overall, we can see that the measure combines general exposure to trade, with time series variations reflecting exposure to countries and their exchange rate movements.

We use this variable to evaluate the effect of trade on economic activity. Using monthly data, we run the following regression:

$$D_{c,t} = \gamma_c + \gamma_t + \beta \times Exposure_Trade_{c,t} + \varepsilon_{c,t}, \quad (4)$$

where $D_{c,t}$ is the log of bank debits in city c at time t . We do not have many controls at the city-monthly level, so we include a city fixed effect in all specifications. We do this to focus on the variation in debits within the city, independent of the size. We include a time fixed effect to control for the common variation and focus on the cross-sectional variation given by changes in the relative exchange rate by individual countries. In some specifications, we include state-time fixed effects to control for any common change at the state level or Fed-time fixed effects to control for any common change at the Federal Reserve District level. Errors are clustered at the city level. [Table 2](#) shows the results.

Table 2: Exposure to Trade and Exchange Rate Variation and Economic Activity

	(1)	(2)	(3)	(4)	(5)	(6)
Exposure Trade	1.193*** (0.253)	0.836*** (0.260)	0.758*** (0.216)	2.176*** (0.449)	1.965*** (0.453)	1.564*** (0.529)
City FE	Yes	Yes	Yes	Yes	Yes	Yes
Time FE	Yes	-	-	Yes	-	-
Fed-Time FE	No	Yes	No	No	Yes	No
State-Time FE	No	No	Yes	No	No	Yes
Sample	All	All	All	≤1933m3	≤1933m3	≤1933m3
Observations	21,807	21,807	21,164	13,269	13,269	12,899
R-squared	0.990	0.992	0.993	0.994	0.994	0.995

Notes: The table shows the results of regression 4. The dependent variable is the log of bank debits at the city level. The independent variable is the measure constructed according to equation 3. The different columns show the results with a combination of fixed effects as specified in the table. Standard errors are clustered at the city level. *** $p < 0.01$, ** $p < 0.05$, * $p < 0.1$

We find a significant effect of trade exposure (competitiveness) on economic activity. A big part of the identification comes from the common variation, since the main events affected many countries. But thanks to our measure, which considers country-specific variation, we can estimate an effect even including time fixed effects. A 1 percent variation in the city cross-section exposure, considering the time variation, increases economic activity by 1.19 percent. Using even more granular variation at the state level still yields positive and significant results. This variation takes into account some common exposure of regions. For example, cities in Michigan specialized in the automotive industry, so the results with state-time fixed effects take that common variation into account. The results are still significant and large, with a coefficient of 0.76.

One concern is that the results might be biased by US-led events and might be endogenous. In April 1933, the US abandoned the gold standard. As we explained before, there is no evidence that this event was expected, but still the results might be contaminated by that common variation across US cities and other policies that were implemented at that time. In columns (4)-(6) we only consider the period when the US was on the gold standard. Therefore, the variation in the exchange rate came from

foreign policy decisions. We can see that the coefficients are not only significant, but even larger: including time fixed effects, a 1 percent variation in the city cross-section exposure increases economic activity by 2.17 percent. These results are in line with [Obstfeld, Ostry, and Qureshi \(2019\)](#), who show that under fixed regimes, global shocks are magnified.

Next, we estimate the contribution of trade exposure to the depth of the Great Depression between 1931 and 1932 and to the recovery between 1933 and 1934. For simplicity, we use a version of equation 4 with a unique time fixed effect. Then, we assess the contribution of the average effect over the cities $\beta \times \overline{Exposure_Trade}_{c,t}$ compared with the time effect γ_t , around the two main events covered in this paper. In particular, we will show how much of the total change in economic activity after those events can be attributed to the trade channel. This analysis abstracts from spillover effects and only shows direct effects. In a sense, it would be a lower bound of the total contribution of the trade channel.

As we showed before, when large changes in the exchange rate occurred, not every city was exposed in the same way to trade. Actually, only 35 percent of the workers in our sample were employed in trade sectors according to our classification, and that percentage varies from cities with less than 5 percent, such as Washington DC, to others with more than 70 percent, such as Elberton, GA. This variation interacts with changes in the exchange rate, creating variation even when there are some common movements. Because of this, the time fixed effect captures common movements, taking into consideration cities that were almost unexposed in our sample. In the next subsection, we evaluate the event of 1931.

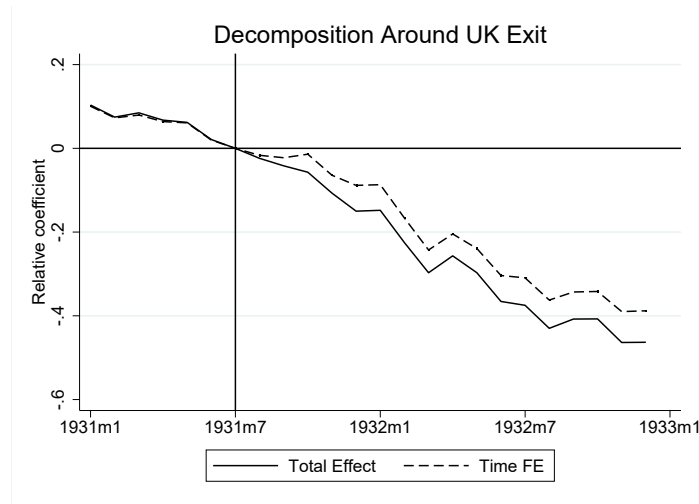
4.1 UK's Exit and Trough of the Great Depression

We first analyze what happened to the external sector after the large appreciation of the US dollar in 1931. This event was the consequence of policies implemented by other countries to deal with their respective local crises. As discussed before, Mexico exited

in August 1931 and the UK in September 1931. In this sense, the event is exogenous relative to our observation units, which are particular cities in the US.

Figure 5 plots the total average effect $\gamma_t + \beta \times \overline{Exposure_Trade}_{c,t}$ versus the time fixed effect γ_t . For both cases, it shows the changes over its own level in July 1931. As the dependent variable is in logs, this approximates to percentage changes with respect to the level of each effect in that period of time.

Figure 5: Effect of Exchange Rate Appreciation on Trade-Exposed Cities



Notes: The figure plots the changes in the average time fixed effect γ_t and the average total effect $\gamma_t + \beta \times \overline{Exposure_Trade}_{c,t}$ relative to July 1931. The result comes from regression 4 reported in Table 2

Figure 5 shows a large reaction of trade-exposed cities. After having similar trends, cities more exposed to trade show a large decrease in economic activity after August 1931 relative to the rest of the sample, conditional on their individual exposure to changes in the exchange rate. This effect is economically significant. As shown in Figure 5, on average, the economy had reduced its economic activity by 16 percent by the end of 1931 and around 40 percent of that effect was due to trade exposure. After that, the economy continues to decline. By the end of 1932, the trade exposure effect directly accounted for 16 percent of that effect.

This result shows that the effect of the trade channel was relevant compared with

the common trends in the economy at that time. This is a direct effect, meaning that we do not estimate any other type of multiplier. The appreciation of the US dollar in 1931 was strong, but the depreciation of 1933 was much greater in magnitude. In the next subsection, we evaluate the recovery starting in April 1933.

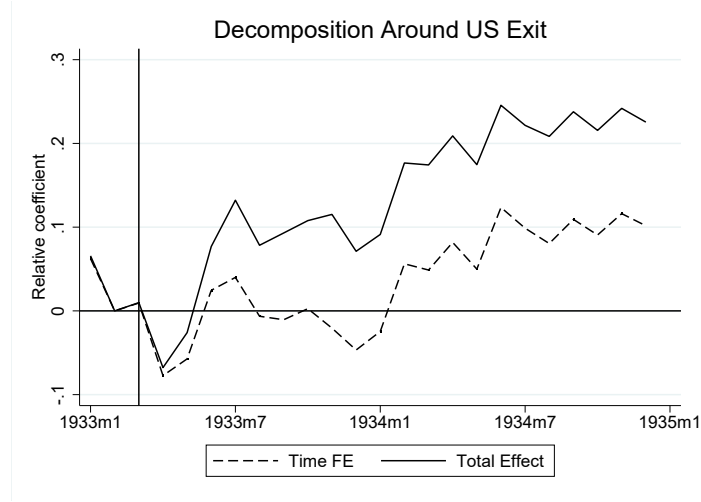
4.2 Recovery

In April 1933, the US left the gold standard and the US dollar depreciated relative to other currencies, as shown in Figure 1. The abandonment of the gold standard was part of the plan of the Democratic party according to [Eggertsson \(2008\)](#) and not expected until March 1933 ([Hsieh and Romer \(2006\)](#)). But the change in policy was accompanied by many other policy changes. Many factors can explain the recovery that the economy experienced beginning in the spring of 1933. Some work has focused on expectation channels, whereby higher inflation expectations induced by Roosevelt's policies reduced the ex-ante real interest rate, stimulating investment and consumption through traditional channels ([Eggertsson \(2008\)](#), [Jalil and Rua \(2016\)](#), [Sumner \(2015\)](#), and [Taylor and Neumann \(2016\)](#)). Other work focuses on the role of public debt in the context of higher inflation; see, for example, [Jacobson, Leeper, and Preston \(2019\)](#). [Hausman, Rhode, and Wieland \(2019\)](#) argue that higher inflation coming from higher traded crop prices redistributed income from lenders (nonfarm households and businesses) with a relatively low marginal propensity to consume, to debtors (farmers) with a relatively high marginal propensity to consume. [Cole and Ohanian \(2004\)](#) argue that the recovery from the Great Depression was weak due to New Deal cartel-type policies.

In order to evaluate the contribution of the trade channel relative to that of other policies, we perform the same exercise as in the previous subsection, but relative to February 1933 to capture the contribution of the depreciation. The other policies implemented at the time do not seem to have a special focus on the external sector, so those considerations will be captured by common trends (time fixed effects) if they affected trade cities in the same way as nontrade cities. Figure 6 shows the effect fol-

lowing the abandonment of the gold standard by the US.

Figure 6: Trade Exposure Effect and US Abandons the Gold Standard



Notes: the figure plots the changes of the average time fixed effect γ_t and the average total effect $\gamma_t + \beta \times \overline{Exposure_Trade}_{c,t}$ relative to February 1933. The result comes from regression 4 reported in Table 2

As Figure 6 shows, in this case the trade channel’s contribution is very important. We observe that after April 1933, more exposed cities experienced a large increase in their economic activity. After March 1933 there is a drop on average. That month was characterized by a bank holiday, so there are fewer observations for our sample and some cities show very small numbers that month. After that, there is an immediate increase in economic activity in more exposed cities. This effect is persistent. More exposed cities continued to have a higher level of economic activity. Overall, we can see that the trade channel also played an important role in the recovery that occurred after 1933.

The effect is large. We can see that the contribution of the trade channel is particularly important in 1933. By the end of that year, all the effect in terms of the recovery was due to the trade exposure, where cities on average increased their economic activity around 10 percent relative to February, even if the common trend was negative. Starting in 1934, the average time fixed effect is positive. By April 1934, the average

total effect was 20 percent relative to February 1933, and the trade channel contributed more than 60 percent of the total effect. By the end of 1934 the contribution was still over 50 percent. We can see that the trade channel was the main driver of the economic recovery that started in 1933 and it continued to be relevant effect after that year.

These results were obtained with very granular data at the city level, but a good part of the variation is common to the cities. In the next section, we construct a measure of the increase in economic activity and we interact it with time dummies, to not rely on the effect of the exchange and see how income translated to spending. We use these results as robustness.

5 Robustness Using Bartik

In this section, we use another measure of trade exposure as a robustness test, exploiting the growth rates of the export sectors between 1932 and 1933. This measure will closely indicate the increase in income that cities received given their sectoral exposure to trade. We rely on the main events analyzed before -the UK exit in 1931 and the US exit in 1933- to evaluate the effect of changes in the exchange rate on the economic activity of export-oriented cities. For this empirical exercise, instead of using the changes in the exchange rate, we rely only on time fixed effects interacted with the measure of exposure to an increase in exports to see whether more exposed cities had a relatively stronger economic recovery compared with less exposed cities.

In particular, we build a constant city level measure of exposure to trade. As in the previous section, we get industrial employment at the county and industry level in 1930. Then, we obtain data on the sectoral exports of the US between April 1932 and March 1933 and compared it with the data between April 1933 and March 1934. With that information, we construct the following measure of exposure à la [Autor, Dorn, and Hanson \(2013\)](#):

$$Trade_Exposure_{c,33-32} = \sum_s \frac{L_{c,s,1930}}{L_{c,1930}} \times \frac{Exports_{s,1934m3} - Exports_{s,1933m3}}{Exports_{s,1933m3}}, \quad (5)$$

where $L_{c,s,1930}$ is the employment in 1930 in county c and sector s , $L_{c,1930}$ is total employment in county c , and $Exports_{s,y}$ is total exports in sector s over the last 12 months of y .¹⁹ The data on economic activity are at the city level, but we use employment at the level of the county where the city is located.²⁰ This measure of exposure combines the sectoral employment composition of the county where the city is located with goods-level information on exports in terms of the US products that were more in demand abroad. Table A.4 shows the composition of merchandise exports between April 1932 and March 1933 and the annual growth rate of the value of exports from April 1933 to March 1934, compared with April 1932-March 1933 by type of commodities. The main exports are unmanufactured cotton (21.4 percent), petroleum and products (13.9 percent), automobiles and other vehicles (6.1 percent), tobacco and manufactures (4.6 percent) and fruits and nuts (4.9 percent).²¹ The product categories that experienced the highest growth in the value of their exports by March 1934 were iron and steel semi-manufactures (157.8 percent), meat products (62.7 percent), nonferrous metals (55.5 percent), automobiles (50.0 percent), other nonmetallic mineral products (49.9 percent), wood semi-manufactures (46.7 percent), unmanufactured cotton (46.1 percent) and tobacco (36.8 percent). We can see that the sectors that grew the most were related to the metal manufacturing industry and some agricultural sectors, such as cotton, which is concentrated in certain areas of the country.

With this measure we will show which cities grew more after the shock in 1933,

¹⁹Table A.3 in Appendix A.1 contains the correspondence between export sectors and industrial sectors.

²⁰Some cities were independent, in which case we only use city level employment.

²¹It is estimated that in 1934 the production of goods for export provided a direct living for about 2 million people; approximately 1 million were cotton farmers and another half a million were engaged in other agricultural activities. Additionally, several million benefited indirectly by supplying goods and services to the export sector (Patch (1935)).

relative to the lowest level of exports in 1932. This could be seen as a direct effect. A city that exported more will have an increase in economic activity if exports rise. But, in our estimations, we will compare the growth of the more exposed cities relative to less export-dependent cities, so we are estimating the additional direct effect on the exposed cities. In the case where other policies were more important (for example, those that benefited the financial sector), this coefficient should not be positive or even negative. Because of that, this marginal effect will measure whether the more exposed cities benefited more, relative to the any other common effect or specific effect in other industries.

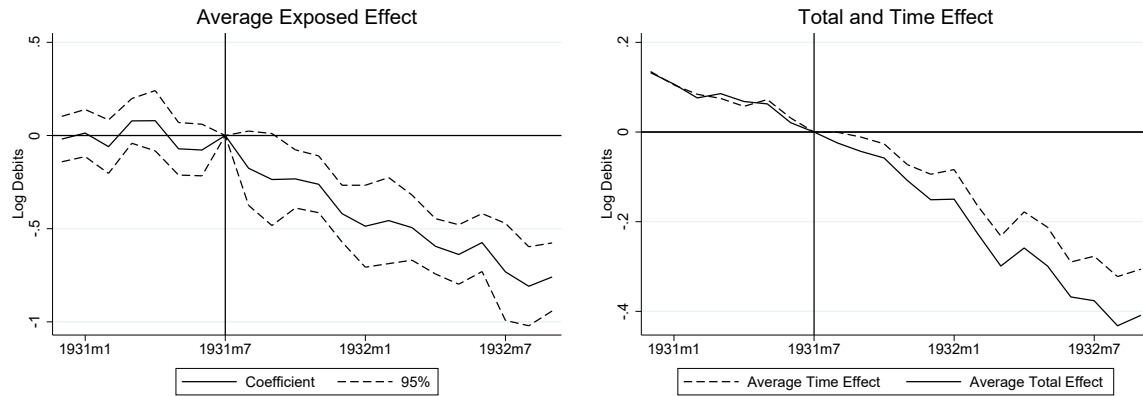
As in the previous section, we estimate the effect of the appreciation of 1931 on economic activity in trade-exposed cities. Here, we will not use the changes in the exchange rate; instead, we will use the across-time variation as a source of identification because that the largest appreciation occurred at a specific period. We can compare the pre-trends with the performance of the more exposed cities following the appreciation. This event occurred outside the US so it is unlikely that a more exposed city could have influenced that event. We run the following specification:

$$D_{c,t} = \alpha_c + \gamma_{s(c),t} + \sum_{\tau=0}^T \beta^\tau \times Trade_Exposure_{c,33-32} \times \mathbb{1}_\tau + \varepsilon_{i,t}, \quad (6)$$

where $D_{c,t}$ is the seasonally adjusted log debits, $Trade_Exposure_{c,33-32}$ is the trade exposure measure shown in equation 5, $\gamma_{s(c),t}$ is a state-time fixed effect and α_c is a city fixed effect. $\mathbb{1}_\tau$ is an indicator variable that is one for year τ . The regression includes time-specific effects, meaning that β^τ will capture differential outcomes across more and less exposed cities. This empirical design implies that the coefficient β^τ represents the time fixed effect of average exposed cities relative to a baseline that considers the average effect of the rest of our sample. In 1931, the economic activity of the whole country was decreasing. $\gamma_{s(c),t}$ will capture that effect even at the state level. The left

panel of Figure 7 shows how more exposed cities behaved after the appreciation of the US dollar, given the shock of several countries exiting the gold standard. In the right panel, we show the contribution of this effect relative to the average effect over the cities at each period of time. We compute the average time effect $(\overline{\gamma_{s(c)t}})$, and the average exposed effect $(\overline{\gamma_{s(c)t}} + \beta^t \times \overline{Trade_Exposure_{c,33-32}})$.

Figure 7: Effect of Exchange Rate Appreciation on Trade-Exposed Cities



Notes: The right panel shows the results from the regression of the specification in equation 6. The solid line represents the coefficient β^t . The coefficient is relative to July 1931 (equal to 0). The dashed lines represent confidence intervals at the 95 percent level. Standard errors are two-way clustered at the city and time level. The right panel plots the average time effect $\overline{\gamma_{s(c)t}}$ and the average total effect $\overline{\gamma_{s(c)t}} + \beta^t \times \overline{Trade_Exposure_{c,33-32}}$.

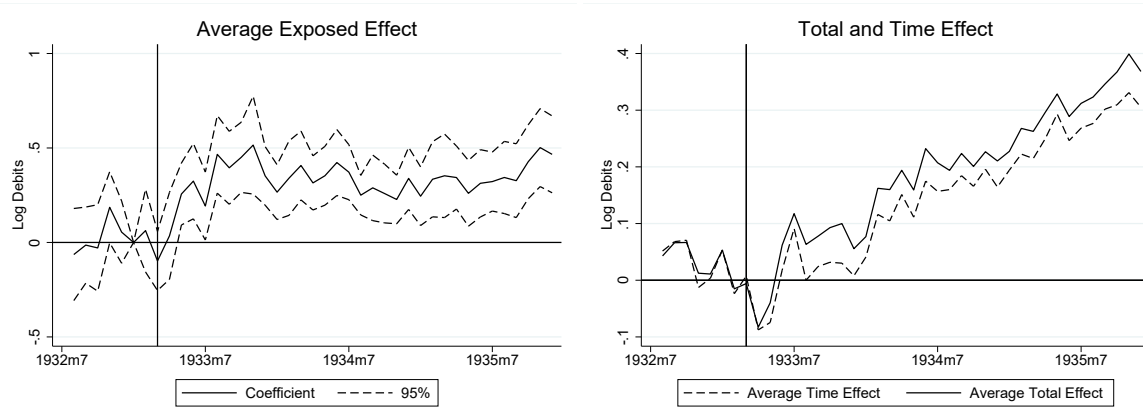
After having similar trends, cities more exposed to trade show a large decrease in economic activity after August 1931 relative to the rest of the sample. This effect is economically relevant. As shown in the left panel of Figure 7, the average exposure compared with the common trend of cities (time fixed effects) represents around a third of the effect by 1932.

These effects are large. The average measure of exposure is 0.136 and the standard deviation is 0.091. This means that in August 1932, an average trade-exposed city decreased its economic activity by 10 percent, relative to a less exposed city even in the same state. We can see in the right panel of Figure 7 that the contribution of this effect

is economically significant. These results are similar to those found in the previous section.

We then run the specification in equation 6, but relative to January 1933 to capture the effect of the depreciation. The other policies implemented at the time do not seem to have a special focus on the external sector, so those considerations will be captured by common trends by the time fixed effect if they affected trade cities in the same way as no-trade cities. In this regression we will basically see if the trade channel has a differential effect versus the other channels. Figure 8 shows the effect following the abandonment of the gold standard by the US.

Figure 8: Trade Exposure Effect and US Abandons the Gold Standard



Notes: The figure shows the results from the regression of the specification in equation 6. The solid line represents the coefficient β^t . The coefficient is normalized to 1 in February 1933. The dashed lines represent confidence intervals at the 95 percent level. Standard errors are two-way clustered at the city and time level. The right panel plots the average time effect $\overline{\gamma_{s(c)t}}$ and the average total effect $\overline{\gamma_{s(c)t}} + \beta^t \times \overline{Trade-Exposure_{c,33-32}}$

We observe that after April 1933, more exposed cities experienced a large increase in their economic activity. There is a small drop in the more exposed cities in March 1933. That month was characterized by a bank holiday, so there are fewer observations for our sample and some cities show very small numbers that month. After that, there is an immediate increase in economic activity in more exposed cities. This effect is

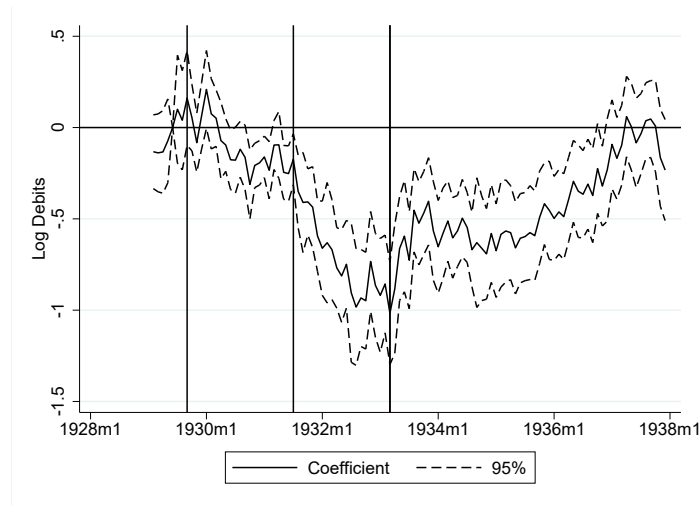
persistent. More exposed cities continued to have a higher level of economic activity. Overall, we can see that the trade channel also played an important role in the recovery that occurred of 1933.

The coefficient is close to 0.5 by the end of 1933, which represents on average 7 percent more economic activity compared to the average growth. As explained before, many other policies were implemented at that time. Many of those are captured by the state-time fixed effect. The results show that more exposed cities grew relative to the rest of the sample. This indicates that the trade channel accounts for a significant differential effect, in a period when the whole country was growing. Considering this estimation, the contribution of the trade channel is similar to the numbers obtained in the previous section.

These results show that cities that increased their exports-related income because of their trade-exposure and increased their exports due to the exit of the US from the gold standard also significantly increased their spending relative to the other cities. Also, these results show that those same cities were particularly affected when the UK left the gold standard.

With this specification we can map the whole Great Depression and see how trade-exposed cities behaved. Also, we do not rely on data on the exchange rate, which experienced changes over time. In the next figure, we plot the coefficient of the regression 6, between 1929 and 1936, representing the whole Great Depression and the recovery before the crisis of 1937. We normalize the coefficient to 0 in June 1929.

Figure 9: Trade Exposure Effect and the Great Depression



Notes: The figure shows the results from the regression of the specification in equation 6. The solid line represents the coefficient β^t . The coefficient is normalized to 0 in June 1929. The dashed lines represent confidence intervals at the 95 percent level. Standard errors are two-way clustered at the city and time level. Vertical lines represent October 1929, August 1931, and March 1933

We can see an interesting pattern that coincides with some main events during the Great Depression. There is a stable relationship in the level of economic activity between exposed and nonexposed cities until June 1930, when the Smoot-Hawley Tariff Act was signed, and exposed cities lost ground relative to nonexposed cities. The Smoot-Hawley Tariff Act produced a trade war in which countries retaliated by boycotting US products, which can explain why export-oriented cities were affected (see [Mitchener, Wandschneider, and O'Rourke \(2021\)](#)). Then, when the UK and its major trading partners went off the gold standard, exposed cities were hit hard once again. There is an incomplete recovery when the US left the gold standard in April 1933 and exposed cities began to improve relative to nonexposed cities during the second half of 1935, when President Roosevelt signed trade agreements with the main trading partners of the US (e.g. with Canada in November 1935). Exposed cities converged to the level of less exposed cities at the state level only by the end of 1936.

These results show the importance of the trade channel during the Great Depres-

sion. US exporting cities were significantly affected relative to less dependent cities in the US, and their recovery depended on the devaluation of the exchange rate and the creation of trade agreements.

6 Conclusion

This paper explores the effect that the gold standard as a fixed exchange rate system had on the US economy during the Great Depression. Using novel micro data, we show that the terms of trade adjusted after the large currency changes that occurred when countries abandoned the gold standard. We show that the US was affected by the exit of the UK. The average trade-exposed city led the economic decline in economic activity in 1931. We also find that the opposite happened when the US abandoned the gold standard. This paper shows that the trade channel played an important role in the depth of and the recovery from the Great Depression.

This channel adds to others that have been analyzed in the literature, but it has the advantage that we tested it in a different context than the recovery of 1933, when many other policies were implemented at the same time.

This paper shows that fixed exchange rate regimes contributed to economic crises of the past and can have important implications today. Some type of fixed exchange rate is still used by a large number of countries according to recent evidence ([Ilzetzi, Reinhart, and Rogoff \(2019\)](#)). Our results show that those regimes could have detrimental effects for their external sectors in the case of negative shocks. Moreover, countries belonging to currency unions, such as those of the Eurozone, have experienced different recovery paths since the Great Recession. In a world with high financial and trade integration, limiting the ability of the exchange rate to adjust can have important sectoral implications that could translate into deep economic recessions.

This paper also shows that relaxing those pegs could be beneficial for economic recovery. In this paper we show that exporting cities experienced an almost immediate recovery compared with nonexporting cities when the dollar depreciated in 1933. As

[Friedman \(1953\)](#) pointed out, the exchange rate is a relatively flexible price that allows the rest of the prices in the economy to adjust relative to those in other countries. The results of this paper confirm that logic and highlight the importance of that mechanism in buffering macroeconomic shocks.

References

- Albornoz, Facundo and Ezequiel García-Lembergman. 2020. "Importing After Exporting." *Unpublished Manuscript* .
- Amiti, Mary, Oleg Itskhoki, and Jozef Konings. 2014. "Importers, Exporters, and Exchange Rate Disconnect." *American Economic Review* 104 (7):1942–78. DOI <https://doi.org/10.1257/aer.104.7.1942>.
- Atkeson, Andrew and Ariel Burstein. 2008. "Pricing-to-Market, Trade Costs, and International Relative Prices." *American Economic Review* 98 (5):1998–2031. DOI <https://doi.org/10.1257/aer.98.5.1998>.
- Auer, Raphael, Ariel Burstein, and Sarah M. Lein. 2021. "Exchange Rates and Prices: Evidence from the 2015 Swiss Franc Appreciation." *American Economic Review* 111 (2):652–86. DOI <https://doi.org/10.1257/aer.20181415>.
- Autor, David H., David Dorn, and Gordon H. Hanson. 2013. "The China Syndrome: Local Labor Market Effects of Import Competition in the United States." *American Economic Review* 103 (6):2121–68. DOI <https://doi.org/10.1257/aer.103.6.2121>.
- Bernanke, Ben S. 1995. "The Macroeconomics of the Great Depression: A Comparative Approach." *Journal of Money, Credit and Banking* 27 (1):1–28. DOI <https://doi.org/10.2307/2077848>.
- Bernard, Andrew B., J. Bradford Jensen, Stephen J. Redding, and Peter K. Schott. 2007. "Firms in International Trade." *Journal of Economic Perspectives* 21 (3):105–130. DOI <https://doi.org/10.1257/jep.21.3.105>.
- Binder, Carola Conces. 2016. "Estimation of Historical Inflation Expectations." *Explorations in Economic History* 61:1–31. DOI <https://doi.org/10.1016/j.eeh.2016.01.002>.
- Blaum, Joaquin. 2019. "Global Firms in Large Devaluations." *Unpublished Manuscript, Brown University* .

- Bordo, Michael D. and Christopher M. Meissner. 2020. "Original Sin and the Great Depression." DOI <https://doi.org/10.3386/w27067>.
- Burstein, Ariel, Martin Eichenbaum, and Sergio Rebelo. 2005. "Large Devaluations and the Real Exchange Rate." *Journal of Political Economy* 113 (4):742–784. DOI <https://doi.org/10.1086/431254>.
- Burstein, Ariel and Gita Gopinath. 2014. "International Prices and Exchange Rates." In *Handbook of International Economics*, vol. 4. Elsevier, 391–451. DOI <https://doi.org/10.1016/B978-0-444-54314-1.00007-0>.
- Campa, Jose Manuel. 1990. "Exchange Rates and Economic Recovery in the 1930s: An Extension to Latin America." *Journal of Economic History* 50 (3):677–682. DOI <https://doi.org/10.1017/S0022050700037232>.
- Cole, Harold L. and Lee E. Ohanian. 2004. "New Deal Policies and the Persistence of the Great Depression: A General Equilibrium Analysis." *Journal of Political Economy* 112 (4):779–816. DOI <https://doi.org/10.1086/421169>.
- Diercks, Anthony M., Jonathan Rawls, and Eric Sims. 2020. "Bury the Gold Standard? A Quantitative Exploration." *NBER Working Paper* 28015. DOI <https://doi.org/10.3386/w28015>.
- Dornbusch, Rudiger. 1987. "Exchange Rates and Prices." *American Economic Review* 77 (1):93–106. DOI <http://www.jstor.org/stable/1806731>.
- Eggertsson, Gauti B. 2008. "Great Expectations and the End of the Depression." *American Economic Review* 98 (4):1476–1516. DOI <https://doi.org/10.1257/aer.98.4.1476>.
- Eichengreen, Barry. 1996. *Golden Fetters: The Gold Standard and the Great Depression, 1919-1939*. Oxford University Press. DOI <https://doi.org/10.1093/0195101138.001.0001>.

- Eichengreen, Barry and Marc Flandreau. 2009. "The rise and fall of the dollar (or when did the dollar replace sterling as the leading reserve currency?)." *European Review of Economic History* 13 (3):377–411. DOI <https://doi.org/10.1017/S1361491609990153>.
- Eichengreen, Barry, Naeun Jung, Stephen Moch, and Ashoka Mody. 2014. "The Eurozone Crisis: Phoenix Miracle or Lost Decade?" *Journal of Macroeconomics* 39:288–308. DOI <https://doi.org/10.1016/j.jmacro.2013.08.005>.
- Eichengreen, Barry and Jeffrey Sachs. 1985. "Exchange Rates and Economic Recovery in the 1930s." *Journal of Economic History* 45 (4):925–946. DOI <https://doi.org/10.1017/S0022050700035178>.
- Farhi, Emmanuel and Matteo Maggiori. 2018. "A Model of the International Monetary System." *The Quarterly Journal of Economics* 133 (1):295–355. DOI <https://doi.org/10.1093/qje/qjx031>.
- Feenstra, Robert C. 1989. "Symmetric pass-through of tariffs and exchange rates under imperfect competition: An empirical test." *Journal of International Economics* 27 (1):25–45. DOI [https://doi.org/10.1016/0022-1996\(89\)90076-7](https://doi.org/10.1016/0022-1996(89)90076-7).
- Friedman, Milton. 1953. "The case for flexible exchange rates." *Essays in Positive Economics* 157 (203):33.
- Gali, Jordi and Tommaso Monacelli. 2005. "Monetary Policy and Exchange Rate Volatility in a Small Open Economy." *Review of Economic Studies* 72 (3):707–734. DOI <https://doi.org/10.1111/j.1467-937X.2005.00349.x>.
- Goldberg, Pinelopi Koujianou and Michael M. Knetter. 1997. "Goods Prices and Exchange Rates: What Have We Learned?" *Journal of Economic Literature* 35 (3):1243–1272. DOI <http://www.jstor.org/stable/2729977>.
- Gopinath, Gita, Emine Boz, Camila Casas, Federico J Díez, Pierre-Olivier Gourinchas,

- and Mikkel Plagborg-Møller. 2020. "Dominant Currency Paradigm." *American Economic Review* 110 (3):677–719. DOI <https://doi.org/10.1257/aer.20171201>.
- Gopinath, Gita, Oleg Itskhoki, and Roberto Rigobon. 2010. "Currency Choice and Exchange Rate Pass-through." *American Economic Review* 100 (1):304–36. DOI <https://doi.org/10.1257/aer.100.1.304>.
- Hausman, Joshua K., Paul W. Rhode, and Johannes F. Wieland. 2019. "Recovery from the Great Depression: The Farm Channel in Spring 1933." *American Economic Review* 109 (2):427–72. DOI <https://doi.org/10.1257/aer.20170237>.
- Hsieh, Chang-Tai and Christina D. Romer. 2006. "Was the Federal Reserve Constrained by the Gold Standard During the Great Depression? Evidence from the 1932 Open Market Purchase Program." *Journal of Economic History* :140–176 DOI <https://doi.org/10.1017/S0022050706000064>.
- Ilzetzki, Ethan, Carmen M. Reinhart, and Kenneth S. Rogoff. 2019. "Exchange Arrangements Entering the Twenty-First Century: Which Anchor will Hold?" *Quarterly Journal of Economics* 134 (2):599–646. DOI <https://doi.org/10.1093/qje/qjy033>.
- Jacobson, Margaret M., Eric M. Leeper, and Bruce Preston. 2019. "Recovery of 1933." Tech. rep., National Bureau of Economic Research.
- Jalil, Andrew J and Gisela Rua. 2016. "Inflation Expectations and Recovery in Spring 1933." *Explorations in Economic History* 62:26–50. DOI <https://doi.org/10.1016/j.eeh.2016.07.001>.
- Knetter, Michael M. 1989. "Price Discrimination by U.S. and German Exporters." *American Economic Review* 79 (1):198–210. DOI <http://www.jstor.org/stable/1804781>.
- Levy-Yeyati, Eduardo and Federico Sturzenegger. 2003. "To Float or to Fix: Evidence on the Impact of Exchange Rate Regimes on Growth." *American Economic Review* 93 (4):1173–1193. DOI <https://doi.org/10.1257/000282803769206250>.

- Lopez-Cordova, J. Ernesto and Christopher M. Meissner. 2003. "Exchange-Rate Regimes and International Trade: Evidence from the Classical Gold Standard Era." *American Economic Review* 93 (1):344–353. DOI <https://doi.org/10.1257/000282803321455331>.
- Miranda-Agrippino, Silvia and Helene Rey. 2020. "U.S. Monetary Policy and the Global Financial Cycle." *Review of Economic Studies* 87 (6):2754–2776. DOI <https://doi.org/10.1093/restud/rdaa019>.
- Mitchener, Kris James and Gonçalo Pina. 2020. "Pegxit Pressure." *Journal of International Money and Finance* 107:102191. DOI <https://doi.org/10.1016/j.jimonfin.2020.102191>.
- Mitchener, Kris James, Kirsten Wandschneider, and Kevin O'Rourke. 2021. "The Smoot-Hawley Trade War." *NBER Working Paper* 28616. DOI <https://doi.org/10.3386/w28616>.
- Monacelli, Tommaso. 2005. "Monetary Policy in a Low Pass-through Environment." *Journal of Money, Credit and Banking* :1047–1066 DOI <https://doi.org/10.1353/mcb.2006.0007>.
- Nurkse, Ragnar. 1944. *International Currency Experience: Lessons of the Inter-War Period*, vol. 2. League of Nations.
- Obstfeld, Maurice, Jonathan D. Ostry, and Mahvash S. Qureshi. 2019. "A Tie That Binds: Revisiting the Trilemma in Emerging Market Economies." *Review of Economics and Statistics* 101 (2):279–293. DOI https://doi.org/10.1162/rest_a_00740.
- Obstfeld, Maurice and Kenneth Rogoff. 1995. "The Mirage of Fixed Exchange Rates." *Journal of Economic Perspectives* 9 (4):73–96. DOI <https://www.aeaweb.org/articles?id=10.1257/jep.9.4.73>.

- Patch, Buel W. 1934. "Foreign Trade and Currency Stability." <http://library.cqpress.com/cqresearcher/cqresrre1934012500>.
- . 1935. "Foreign Trade Policy of the United States." <http://library.cqpress.com/cqresearcher/cqresrre1935061100>.
- Pedemonte, Mathieu. 2020. "Fireside Chats: Communication and Consumers' Expectations in the Great Depression." *Federal Reserve Bank of Cleveland Working Papers* (WP 20-30). DOI <https://doi.org/10.26509/frbc-wp-202030>.
- Rodrik, Dani. 2008. "The Real Exchange Rate and Economic Growth." *Brookings Papers on Economic Activity* 2008 (2):365–412. DOI <https://ideas.repec.org/a/bin/bpeajo/v39y2008i2008-02p365-439.html>.
- Romer, Christina D. 1992. "What Ended the Great Depression?" *Journal of Economic History* 52 (4):757–784. DOI <https://doi.org/10.1017/S002205070001189X>.
- Ruggles, Steven, Sarah Flood, Ronald Goeken, Jose Pacas, Megan Schouweiler, and Matthew Sobek. 2021. "IPUMS USA: Version 11.0 [dataset]." *Minneapolis, MN: IPUMS* DOI <https://doi.org/10.18128/D010.V11.0>.
- Solomou, Solomos and Dimitris Vartis. 2005. "Effective Exchange Rates in Britain, 1920-1930." *Journal of Economic History* 65 (3):850–859. DOI <https://doi.org/10.1017/S0022050705000318>.
- Sumner, Scott. 2015. *The Midas Paradox: Financial Markets, Government Policy Shocks, and the Great Depression*. Independent Institute.
- Taylor, Jason E. and Todd C. Neumann. 2016. "Recovery Spring, Faltering Fall: March to November 1933." *Explorations in Economic History* 61:54–67. DOI <https://doi.org/10.1016/j.eeh.2016.03.003>.
- Triffin, Robert. 1961. *Gold and the Dollar Crisis: The Future of Convertibility*, vol. 39. Yale University Press.

A Appendix

A.1 Other Tables and Figures

Table A.1: Relationship of Debits to Regional Measures of Economic Activity

	Log Car Registration (State)				% Change in Department Store Sales (Fed)			
	(1)	(2)	(3)	(4)	(5)	(6)	(7)	(8)
Debits	0.610*** (0.008)	1.032*** (0.037)	0.588*** (0.006)	0.349*** (0.053)	0.376*** (0.023)	0.375*** (0.023)	0.248*** (0.037)	0.226*** (0.037)
Region FE	No	Yes	No	Yes	No	Yes	No	Yes
Time FE	No	No	Yes	Yes	No	No	Yes	Yes
Observations	3,480	3,480	3,480	3,480	792	792	792	792
R-squared	0.681	0.786	0.839	0.929	0.438	0.441	0.896	0.900

Notes: The table shows the results of regressions of economic activity variables and bank debits. Rows 1 to 4 show regressions of the monthly log of car registrations at the state level from [Hausman, Rhode, and Wieland \(2019\)](#) and log bank debit, between 1929 and 1934. Rows 5 to 8 show regressions of the percentage change in department store sales over the percentage change in debits at the monthly and Federal Reserve District level, excluding the NY Fed, between 1930 and 1935. Robust standard errors in parentheses. *** $p < 0.01$, ** $p < 0.05$, * $p < 0.1$

Table A.2: Relationship of Debits to National Measures of Economic Activity

	Industrial Production			Business Activity		
	(1)	(2)	(3)	(4)	(5)	(6)
Log Debits	0.346*** (0.032)	0.514*** (0.029)	0.592*** (0.066)	0.496*** (0.026)	0.613*** (0.035)	0.470*** (0.051)
Sample	All	< 1933m3	≥ 1933m3	All	< 1933m3	≥ 1933m3
Observations	117	51	66	117	51	66
R-squared	0.359	0.823	0.492	0.668	0.817	0.457

Notes: The table shows the results of regressions of economic activity variables and bank debits. Rows 1 to 3 show regressions of the monthly log industrial production at the national level and log bank debit, between 1929 and 1938. Rows 4 to 6 show regressions of log business activity measures from the Cleveland Trust Company over the percentage change in debits at the monthly level between 1929 and 1938. Robust standard errors in parentheses. *** $p < 0.01$, ** $p < 0.05$, * $p < 0.1$

Table A.3: Correspondence between Export Sectors
and Industrial Classification

Group	Commodities Groups	1930 Census Industrial Classification
1	Fish	Fish Curing and Packing Fishing
2	Dairy Products	Butter, Cheese, and Condensed Milk Factories
3	Animals, Edible Meat Products Animal Oils and Fats, Edible Other Edible Animal Products Hides and Skins, Raw, Except Furs Animals, Oils, Fats, and Greases Inedible Other Inedible Animals and Animal Products	Slaughter and Packing Houses
4	Leather Leather Manufactures	Trunk, Suitcase, and Bag Factories Tanneries Harness and Saddle Factories Leather Belt, Leather Goods, etc Factories Shoe Factories
5	Grains and preparations Fodders and Feeds Vegetables Oils and Fats, Edible Oilseeds Seeds, Except Oilseeds	Flour and Grain Mills
6	Sugar and Related Products	Sugar Factories and Refineries
7	Cocoa and Coffee Beverages	Liquor and Beverage Industries

Continued on next page

Table A.3 – *Continued from previous page*

Group	Commodities Groups	1930 Census Industrial Classification
8	Tobacco and Manufactures	Cigar and Tobacco Factories Agriculture (Tobacco)
9	Rubber and Manufactures	Rubber Factories
10	Fruits and Nuts Vegetables and Preparations Drugs, Herbs, Leaves and Roots Crude Nursery and Greenhouse Stock Miscellaneous Vegetable Products	Agriculture (No Cotton-Tobacco)
11	Silk manufactures	Silk Mills
12	Rayon and other Synthetic Textiles	Rayon Factories Hat Factories (felt)
13	Furs and Manufactures Dyeing and Tanning Materials Cotton Manufactures Wool Manufactures Silk Unmanufactures	Corset Factories Other and Not Specified Textile Mills Shirt, Collar, and Cuff Factories Glove Factories Carpet Mills Lace and Embroidery Mills Straw Factories Button Factories Sail, Awning, and Tent Factories Other Clothing Factories Broom and Brush Factories Textile Dyeing, Finishing, and Printing Mills Suit, Coat, and Overall Factories Knitting Mills

Continued on next page

Table A.3 – *Continued from previous page*

Group	Commodities Groups	1930 Census Industrial Classification
14	Cotton, Unmanufactured	Cotton Mills
	Cotton Semimanufactures	Agriculture (Cotton)
15	Jute and Manufactures	Hemp, Jute, and Linen Mills
	Flax, Hemp and Ramie Manufactures	Rope and Cordage Factories
	Other Vegetable Fibers and Manufactures	
16	Wool, Semimanufactures	Woolen and Worsted Mills
	Wool, Mohair, and Angora Rabbit Hair, Unmanufactured	
17	Wood, Unmanufactured	Forestry
	Naval Stores, Gums, and Resins	
	Cork and Manufactures	
18	Wood manufactures	Wagon and Carriage Factories
		Other Woodworking Factories
		Furniture Factories
19	Wood Semimanufactures-Sawmill Products	Saw and Planning Mills
20	Paper and Manufactures	Paper Box Factories
		Blank Nook, Envelope, Tag, Paper Bag, etc. Factories
21	Paper Base Stocks	Paper and Pulp Mills
22	Coal and Related Fuels	Coal Mines
		Charcoal and Code Works
23	Stone, Sand, Cement and Lime	Quarries
		Lime, Cement, and Artificial Stone Factories
24	Petroleum and Products	Petroleum Refineries
		Oil Wells and Gas Wells
25	Glass and Glass Products	Glass Factories
26	Clays and Clay Products	Potteries

Continued on next page

Table A.3 – *Continued from previous page*

Group	Commodities Groups	1930 Census Industrial Classification
		Brick, Tile, and Terra-Cotta Factories
27	Precious Stones including Pearls	Marble and Stone Yards
28	Other Nonmetallic Mineral Products	Salt Wells and Works
29	Iron Ore	Iron Mines
30	Iron and Steel, Advanced Manufactures	Tinware, Enamelware, etc, Factories
31	Precious Metals, Jewelry and Plated Ware	Jewelry Factories
32	Agricultural Machinery and Implements	Agricultural Implement Factories
33	Automobiles and other Vehicles	Automobile Factories
34	Coal-tar Products	Paint and Varnish Factories
	Pigments, Paints and Varnishes	
35	Fertilizer and Fertilizer Materials	Fertilizer Factories
36	Vegetable Oils	Soap Factories
	Soap and Toilet Preparations	
37	Musical Instruments	Piano and Organ Factories
38	Clocks and Watches	Clock and Watch Factories
39	Silver	Gold and Silver Mines
	Gold	Gold and Silver Factories
40	Iron and Steel Semimanufactures	Other Iron and Steel and Machinery Factories
	Steel Mill Products-Manufactures	Blast Furnaces and Steel Rolling Mills
41	Ferro-alloys	Not Specified Metal Industries
	Nonferrous Metals, except Precious	Copper Factories
		Brass Mills
		Not Specified Mines
		Lead and Zinc Factories
		Other Metal Factories

Continued on next page

Table A.3 – *Continued from previous page*

Group	Commodities Groups	1930 Census Industrial Classification
		Copper Mines Lead and Zinc Mines Other Specific Mines
42	Electrical Machinery and Apparatus Industrial Machinery	Electrical Machinery and Supply Factories
43	Office Appliances Printing Machinery	Other Miscellaneous Manufacturing Industries
44	Medicinal and Pharmaceutical Preparations Industrial Chemicals Specialties Industrial Chemicals	Other Chemical Factories
45	Explosives, Fuses, etc. Firearms and Ammunition	Explosives, Ammunition, and Fireworks Factories

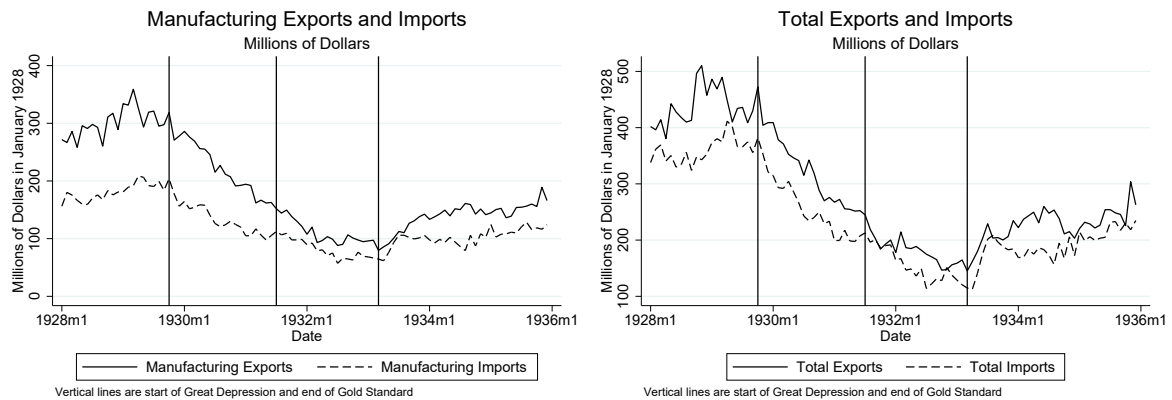
Notes: The table contains the correspondence between export sectors and industrial sectors. The classification of export sectors is the one used in the Statistical Abstract of the United States Foreign Commerce 1935. The classification of industrial sectors corresponds to the 1930 census industrial classification system.

Table A.4: Exports by Commodities Groups

Commodities Groups	Exports Share 32A-33M (%)	Growth Rate 33M-34M (%)
Group 00. Animal and animal products, edible	4.6	20.1
Animal oils and fats, edible	2.4	2.1
Meat products	1.3	62.71
Group 0. Animals and animal products, inedible	2.3	44.0
Group 1. Vegetable food products and beverages	10.6	-4.1
Fruits and nuts	4.9	13.3
Grains and preparations	3.9	-34.9
Group 2. Vegetable products, inedible, except fibers and wood	7.7	33.6
Tobacco and manufactures	5.0	36.8
Rubber and manufactures	1.1	27.7
Group 3. Textiles	25.7	38.2
Cotton, unmanufactured	21.4	46.1
Cotton manufactures	2.5	-9.6
Group 4. Wood and paper	3.8	39.1
Wood semimanufactures-sawmill products	1.8	46.7
Paper and manufactures	1.0	10.6
Group 5. Nonmetallic mineral products	18.5	10.4
Petroleum and products	13.9	7.5
Coal and related fuels	2.9	4.8
Other nonmetallic mineral products	1.1	49.9
Group 6. Metals and manufactures, except machinery and vehicles	5.5	71.6
Nonferrous metals, except precious	2.1	55.5
Iron and steel semimanufactures	1.0	157.8
Group 7. Machinery and vehicles	14.1	36.7
Automobiles and other vehicles	6.1	50.0
Industrial machinery	3.8	21.8
Electrical machinery and apparatus	2.7	28.7
Office appliances	1.0	27.8
Group 8. Chemicals and related products	4.8	19.88
Industrial chemicals	1.0	28.0
Group 9. Miscellaneous	4.2	-3.1
Miscellaneous articles	1.5	-9.2

Notes: The table shows the share of exports between April 1932 and March 1933 and the growth between April 1934 and March 1932 and between April 1932 and March 1933. The table selects sectors with a share of total exports, excluding gold and silver, higher than 1 percent.

Figure A.1: Exports and Imports



A.2 A Model of the Gold Standard and Trade

In this section, we show how the external sector adjusts in fixed and flexible exchange rate regimes after local shocks. The model aims to shed light on the mechanism behind the effect that a depreciation could have after abandoning a fixed exchange rate regime. The model is a standard two country, multi-sector New Keynesian model with sticky prices, where countries might engage in a fixed exchange rate. Households face the following lifetime utility function:

$$\sum_{k=0}^{\infty} \beta^{t+k} U_{j,t+k} = \sum_{k=0}^{\infty} \beta^{t+k} \frac{C_{j,t+k}^{1-\gamma}}{1-\gamma} - \frac{L_{j,t+k}^{1+\alpha}}{1+\alpha},$$

where $j = H, F$ denotes the home and foreign country, β is the intertemporal discount factor, γ is the intertemporal elasticity of substitution and α is one over the Frisch elasticity of labor supply. The total labor supply of country j in time t is $L_{j,t} = \int_0^1 L_{j,T,t}(z) dz + \int_0^1 L_{j,NT,t}(z) dz$ where $\int_0^1 L_{j,T,t}(z) dz$ and $\int_0^1 L_{j,NT,t}(z) dz$ denote the labor supply in the tradable (T) and nontradable (NT) sector, respectively. The consumption bundle of country j , $C_{j,t}$, is composed of a tradable bundle $C_{j,T,t}$ and a nontradable bundle $C_{j,NT,t}$ as

$$C_{j,t} = \left[\phi^{\frac{1}{\nu}} C_{j,T,t}^{\frac{\nu-1}{\nu}} + (1-\phi)^{\frac{1}{\nu}} C_{j,NT,t}^{\frac{\nu-1}{\nu}} \right]^{\frac{\nu}{\nu-1}},$$

where ϕ represents the preferences for tradable goods and ν is the elasticity of substitution between tradable and nontradable goods. The tradable bundle is defined as

$$C_{j,T,t} = \left[\phi_T^{\frac{1}{\sigma}} C_{jj,t}^{\frac{\sigma-1}{\sigma}} + (1-\phi_T)^{\frac{1}{\sigma}} C_{jj',t}^{\frac{\sigma-1}{\sigma}} \right]^{\frac{\sigma}{\sigma-1}},$$

where $C_{jj,t}$ is the bundle of tradable goods produced locally and $C_{jj',t}$ is the bundle of tradable goods imported. ϕ_T denotes the preferences for local tradable goods. σ measures the substitutability between local tradable goods and imported goods. The local tradable bundle, imported bundle, and nontradable bundle consist of a CES consump-

tion bundle of a continuum of producers with a common elasticity of substitution η :

$$C_{jj,t} = \left[\int_0^1 C_{jj,t}(z)^{\frac{\eta-1}{\eta}} dz \right]^{\frac{\eta}{\eta-1}}$$

$$C_{jj',t} = \left[\int_0^1 C_{jj',t}(z)^{\frac{\eta-1}{\eta}} dz \right]^{\frac{\eta}{\eta-1}}$$

$$C_{j,NT,t} = \left[\int_0^1 C_{j,NT,t}(z)^{\frac{\eta-1}{\eta}} dz \right]^{\frac{\eta}{\eta-1}}$$

where $z \in [0, 1]$ denotes good variety. Consumers face the following budget constraint:

$$W_{j,t}L_{j,t} + \Pi_{j,t} + B_{jj,t-1}R_{j,t-1} = B_{jj,t} + P_{j,t}C_{j,t},$$

where $W_{j,t}$ is the local wage, $B_{jj,t}$ is the local riskless bond, $R_{j,t} \equiv (1 + i_{j,t})$ is the local gross return that pays an interest rate $i_{j,t}$ and $\Pi_{j,t}$ are the profits of the domestic firms. $P_{j,t}$ is the local price index, defined as

$$P_{j,t} = \left[\phi P_{j,T,t}^{1-v} + (1 - \phi) P_{j,NT,t}^{1-v} \right]^{\frac{1}{1-v}},$$

where $P_{j,T,t}$ is the price index for tradable goods consumed locally, defined as

$$P_{j,T,t} = \left[\phi_T P_{jj,t}^{1-\sigma} + (1 - \phi_T) \left(\mathcal{E}_{j,t} P_{j',t} \right)^{1-\sigma} \right]^{\frac{1}{1-\sigma}},$$

where $\mathcal{E}_{j,t} = 1/\mathcal{E}_{j',t}$ is the exchange rate that the local consumer must pay to buy a foreign good and $P_{jj,t}$ denotes the price index for tradable goods produced in country j :

$$P_{jj,t} = \left[\int_0^1 P_{jj,t}(z)^{1-\eta} dz \right]^{\frac{1}{1-\eta}}.$$

$P_{j,NT,t}$ is the price index for nontradable goods:

$$P_{j,NT,t} = \left[\int_0^1 P_{j,NT,t}(z)^{1-\eta} dz \right]^{\frac{1}{1-\eta}}.$$

An important value will be the terms of trade. We define the terms of trade as

$$Q_{j,t} = \frac{P_{j'j'}}{P_{jj}} \mathcal{E}_{j,t}.$$

The terms of trade represent how expensive local tradable goods are, compared with foreign tradable goods from consumers' point of view. In this sense, a reduction in the terms of trade implies that for the local consumer, buying imported goods is more convenient. A similar argument can be made for the foreign consumer. Therefore, a reduction in the terms of trade implies that the local tradable good loses competitiveness. We have that the uncovered interest parity condition holds, meaning that

$$i_{H,t} - i_{F,t} = E_t e_{H,t+1} - e_{H,t},$$

where $i_{j,t}$ is the interest rate in j and e_t is the log-linearized exchange rate. Finally, the risk-sharing condition holds. We have:

$$\left(\frac{C_{H,t}}{C_{F,t}} \right)^\gamma = \vartheta_0 \mathcal{E}_t \frac{P_{F,t}}{P_{H,t}}.$$

Countries are symmetric. We assume that initially countries have the same wealth, meaning that $\vartheta_0 = 1$.

We have also two types of firms in each country that produce each variety of the tradable and nontradable good. Each firm has a linear production function that depends on labor and a productivity term that is common across sectors $A_{j,t}$. Defining $Y_{j,s,t}(i)$ as the output of the firm producing the variety i , in country j and sector s , and $L_{j,s,t}(i)$ as its labor demand, the production function is:

$$Y_{j,s,t}(i) = A_{j,t} L_{j,s,t}(i)$$

Firms adjust prices infrequently with an exogenous adjustment parameter θ . Firms compete facing monopolistic competition, resulting in the following expression for price setting:

$$\pi_{j,s,t} = \beta\pi_{j,s,t+1} + \frac{(1-\theta\beta)(1-\theta)}{\theta} \frac{1}{1+\eta} mc_{j,s,t},$$

where $mc_{j,s,t}$ is the average marginal cost for a firm in country j and in sector s . The market clearing conditions are:

$$Y_{j,NT,t} \equiv \left[\int_0^1 Y_{j,NT}(i)^{\frac{\eta-1}{\eta}} di \right]^{\frac{\eta}{\eta-1}} = C_{j,NT,t}$$

and

$$Y_{j,T,t} \equiv \left[\int_0^1 Y_{j,T}(i)^{\frac{\eta-1}{\eta}} di \right]^{\frac{\eta}{\eta-1}} = C_{jj,t} + C_{j'j,t}.$$

As we mentioned before, the terms of trade determine the gains of competitiveness for the local product. Moreover, in equilibrium we can get an expression for the overall net exports. It has been argued (e.g., [Hausman, Rhode, and Wieland \(2019\)](#)) that because changes in net exports made small contributions to US growth in 1933 and 1934, the devaluation could not be expansionary through a higher demand for domestic goods. In the linearized version of this model, we can get an expression between net exports and terms of trade as follows:

$$nx_t \propto \left(\frac{2\phi_T(1-\phi) - 1}{\gamma} + 2(1-\phi_T)\nu(1-\phi) + 2\phi\sigma - 1 \right) q_t,$$

where nx_t is the log deviation with respect to its steady state and q_t the log-linearized terms of trade. We can see that the sign of the relationship is ambiguous and depends positively on the elasticity of substitution between local and foreign varieties, a value that is usually low. Actually, as shown in [Gali and Monacelli \(2005\)](#), it is straightforward to show that when $\sigma = \gamma = \nu = 1$, trade is always balanced, no matter the size of the change in the terms of trade. This can explain why even if exports increased

sharply after the depreciation of 1933, net exports increased only mildly in 1933. We can also show that local consumption is positively related to the terms of trade:

$$C_{H,t} = C_{F,t} + \frac{2}{\gamma} \phi_T (1 - \phi) q_t.$$

Finally, there are two regimes of monetary policy. The first is the fixed exchange rate regime that comes from the gold standard. In that case, we assume that the nominal product is equal to a monetary mass that is equal to the world supply of gold. At the same time, this regime implies a fixed exchange rate, given by

$$P_g M_t = P_{H,t} Y_{H,t} + P_{F,t} Y_{F,t}$$

and

$$\mathcal{E}_t = 1,$$

where M_t is the world supply of gold that we take as constant, the same as the price of gold P_g . All countries have the same gold rule, so equalizing the rule everywhere implies a fixed exchange rate. In the second regime, each country has its own monetary policy rule, given by

$$i_{H,t} = \phi_\pi \pi_{H,t} + \phi_y y_{H,t}$$

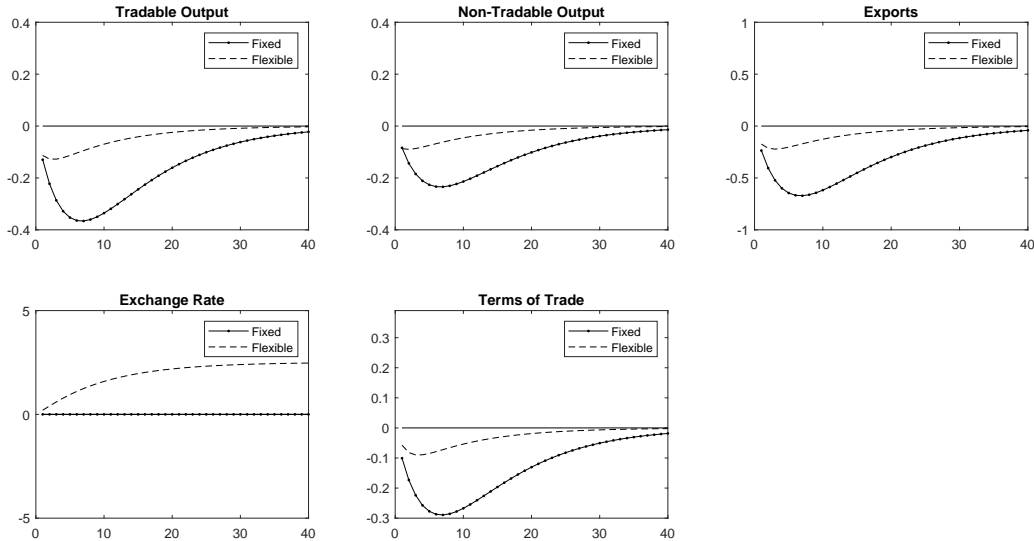
and

$$i_{F,t} = \phi_\pi \pi_{F,t} + \phi_y y_{F,t},$$

with ϕ_π and ϕ_y the weights on the monetary decision for inflation and output. In both regimes the uncovered interest parity holds. We start evaluating the effect of a local negative productivity shock in country H comparing both regimes. We calibrate the data using $\beta = 0.99$, $\alpha = 1.0$, $\eta = 7$, $\rho = 0.9$, $\gamma = 1$, $\theta = 0.7$, $\phi_\pi = 1.5$, $\phi_y = 1.0$, $\phi = 0.7$, $\phi_T = 0.7$, $\nu = 6$ and $\chi = 4$. Figure A.2 compares the dynamics of the economy under

both regimes.

Figure A.2: Productivity Shock under Fixed and Flexible Exchange Rates



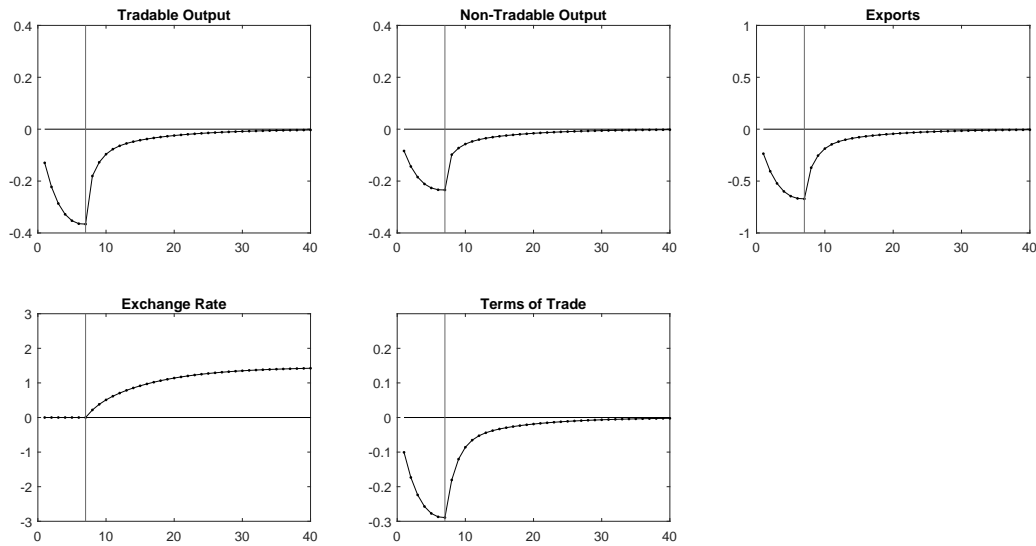
Notes: The figure shows an impulse response from a 1 percent negative productivity shock in the home economy for tradable output, nontradable output, exports, the nominal exchange rate, and the terms of trade in the home economy as defined in the paper. The dashed line represents the impulse response in a flexible exchange rate regime and the solid-dot line represents it under the fixed exchange rate regime.

We can see that under the flexible exchange rate regime the recovery is much faster. Moreover, the contraction of tradable and nontradable output is smaller. Under the fixed exchange rate, the terms of trade decrease much more following a negative productivity shock, which depresses the external sector, as we can see in the decrease in exports. In the flexible regime, the exchange rate depreciates immediately, buffering the reduction in the terms of trade. This creates a gain in competitiveness compared with the fixed exchange rate. This adjustment in relative prices permits an increase in demand for locally produced goods that keeps tradable output relatively high and also increases demand for nontradable goods.

When there is a fixed exchange rate the whole economy is more recessive and the

recession lasts more. In the empirical part of this paper, we will evaluate two regime changes. We can use the model to inform how the transition will be. For that, we simulate the negative local productivity shock and after 8 periods we release the interest rate, moving toward the flexible exchange rate. This change in regime is unexpected. Figure A.3 shows the reaction in terms of output, exports, and the exchange rate.

Figure A.3: Productivity shock With Change in Regime



Notes: The figure shows an impulse response from a 1 percent negative productivity shock in the home economy for tradable output, nontradable output, exports, the nominal exchange rate, and the terms of trade. Until the eighth period, the economy is under the fixed exchange rate regime. After that, the economy unexpectedly switches to a flexible exchange rate regime.

When there is a change in regime we see that the model predicts some very similar figures compared with the empirical facts we will show below. Exports increase strongly after the change in the exchange rate regime. This is produced by an increase in the terms of trade when the regime is changed. We can see that this also produces a strong recovery in the tradable sector, which also pushes up the nontradable sector.

This model allows us to find some margins along which to evaluate the effect of the

change in the exchange rate regime. From the data and the model, we see a currency depreciation and an increase in exports after the change in regime. The increase in exports is not complete in the data, as it represents a shift to a new path of convergence. Empirically we can still evaluate other margins that are important in the model.

A.2.1 Log-linearization

The log-linearized solution is given by the following equations (for simplicity, all the variables in lower case represent log changes):

$$\pi_{H,T,t} = \beta\pi_{H,T,t+1} + \frac{(1-\theta\beta)(1-\theta)}{\theta} \frac{1}{1+\eta} mc_{H,T,t}$$

$$\pi_{F,T,t} = \beta\pi_{F,T,t+1} + \frac{(1-\theta\beta)(1-\theta)}{\theta} \frac{1}{1+\eta} mc_{F,T,t}$$

$$\pi_{H,NT,t} = \beta\pi_{H,NT,t+1} + \frac{(1-\theta\beta)(1-\theta)}{\theta} \frac{1}{1+\eta} mc_{H,NT,t}$$

$$\pi_{F,NT,t} = \beta\pi_{F,NT,t+1} + \frac{(1-\theta\beta)(1-\theta)}{\theta} \frac{1}{1+\eta} mc_{F,NT,t}$$

$$c_{F,t} = -\frac{1}{\gamma}(i_{F,t} - E_t\pi_{F,t+1}) + E_t c_{F,t+1}$$

$$i_{H,t} - i_{F,t} = E_t e_{t+1} - e_t$$

$$p_{H,T,t} = \phi p_{HH,t} + (1-\phi)(p_{FF,t} + e_t)$$

$$p_{F,T,t} = \phi p_{FF,t} + (1-\phi)(p_{HH,t} - e_t)$$

$$p_{H,t} = \phi_T p_{H,T,t} + (1-\phi_T) p_{H,NT,t}$$

$$p_{F,t} = \phi_T p_{F,T,t} + (1-\phi_T) p_{F,NT,t}$$

$$\pi_{H,T,t} = p_{HH,t} - p_{HH,t-1}$$

$$\pi_{F,T,t} = p_{FF,t} - p_{FF,t-1}$$

$$\pi_{H,t} = p_{H,t} - p_{H,t-1}$$

$$\pi_{F,t} = p_{F,t} - p_{F,t-1}$$

$$p_{HH,t} = p_{H,NT,t}$$

$$p_{FF,t} = p_{F,NT,t}$$

$$mc_{H,T,t} = (1 + \alpha)y_{H,T,t} + \left(\gamma - \frac{1}{\nu}\right) c_{H,t} + \left(\frac{1}{\nu} - \frac{1}{\sigma}\right) c_{H,T,t} + \frac{1}{\sigma} c_{HH,t} - (1 + \alpha)a_{H,t}$$

$$mc_{F,T,t} = (1 + \alpha)y_{F,T,t} + \left(\gamma - \frac{1}{\nu}\right) c_{F,t} + \left(\frac{1}{\nu} - \frac{1}{\sigma}\right) c_{F,T,t} + \frac{1}{\sigma} c_{FF,t} - (1 + \alpha)a_{F,t}$$

$$mc_{H,NT,t} = (1 + \alpha)y_{H,NT,t} + \left(\gamma - \frac{1}{\nu}\right) c_{H,NT,t} + \left(\frac{1}{\nu} - \frac{1}{\sigma}\right) c_{H,NT,t} - (1 + \alpha)a_{H,t}$$

$$mc_{F,NT,t} = (1 + \alpha)y_{F,NT,t} + \left(\gamma - \frac{1}{\nu}\right) c_{F,t} + \left(\frac{1}{\nu} - \frac{1}{\sigma}\right) c_{F,NT,t} - (1 + \alpha)a_{H,t}$$

$$c_{FH,t} - c_{FF,t} = \sigma(p_{FF,t} + e_t - p_{HH,t})$$

$$c_{HF,t} - c_{HH,t} = \sigma(p_{HH,t} - e_t - p_{FF,t})$$

$$c_{H,NT,t} - c_{H,T,t} = \nu(p_{H,T,t} - p_{H,NT,t})$$

$$c_{F,NT,t} - c_{F,T,t} = \nu(p_{F,T,t} - p_{F,NT,t})$$

$$c_{H,t} = \phi_T c_{H,T,t} + (1 - \phi_T) c_{H,NT,t}$$

$$c_{F,t} = \phi_T c_{F,T,t} + (1 - \phi_T) c_{F,NT,t}$$

$$c_{H,T,t} = \phi c_{HH,t} + (1 - \phi) c_{HF,t}$$

$$c_{F,T,t} = \phi c_{FF,t} + (1 - \phi) c_{FH,t}$$

$$y_{H,T,t} = \phi c_{HH,t} + (1 - \phi) c_{FH,t}$$

$$y_{F,T,t} = \phi c_{FF,t} + (1 - \phi) c_{HF,t}$$

$$y_{H,t} = \phi y_{H,T,t} + (1 - \phi) y_{H,NT,t}$$

$$y_{F,t} = \phi y_{F,T,t} + (1 - \phi) y_{F,NT,t}$$

$$y_{H,NT,t} = c_{H,NT,t}$$

$$y_{F,NT,t} = c_{F,NT,t}$$

$$a_{H,t} = \rho a_{H,t-1} + \varepsilon_{H,t}$$

$$a_{F,t} = \rho a_{F,t-1} + \varepsilon_{F,t}$$

A.2.2 Fixed Exchange Rate Regime

$$e_t = 0$$

$$M = p_{H,t} + y_{H,t} + p_{F,t} + y_{F,t}$$

A.2.3 Nominal Exchange Rate Regime

$$i_{H,t} = \phi_\pi \pi_{H,t} + \phi_y y_{H,t}$$

$$i_{F,t} = \phi_\pi \pi_{F,t} + \phi_y y_{F,t}$$