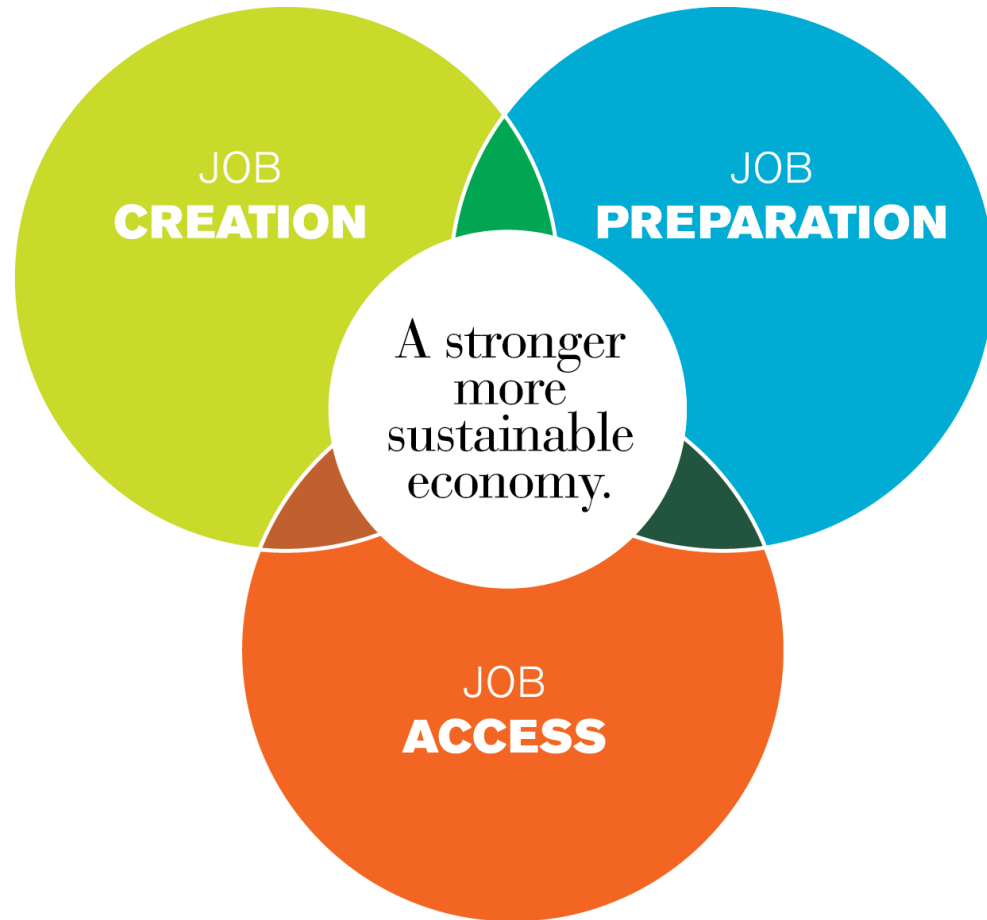


Jobs to People, People to Jobs

Bethia Burke; Fund for Our Economic Future



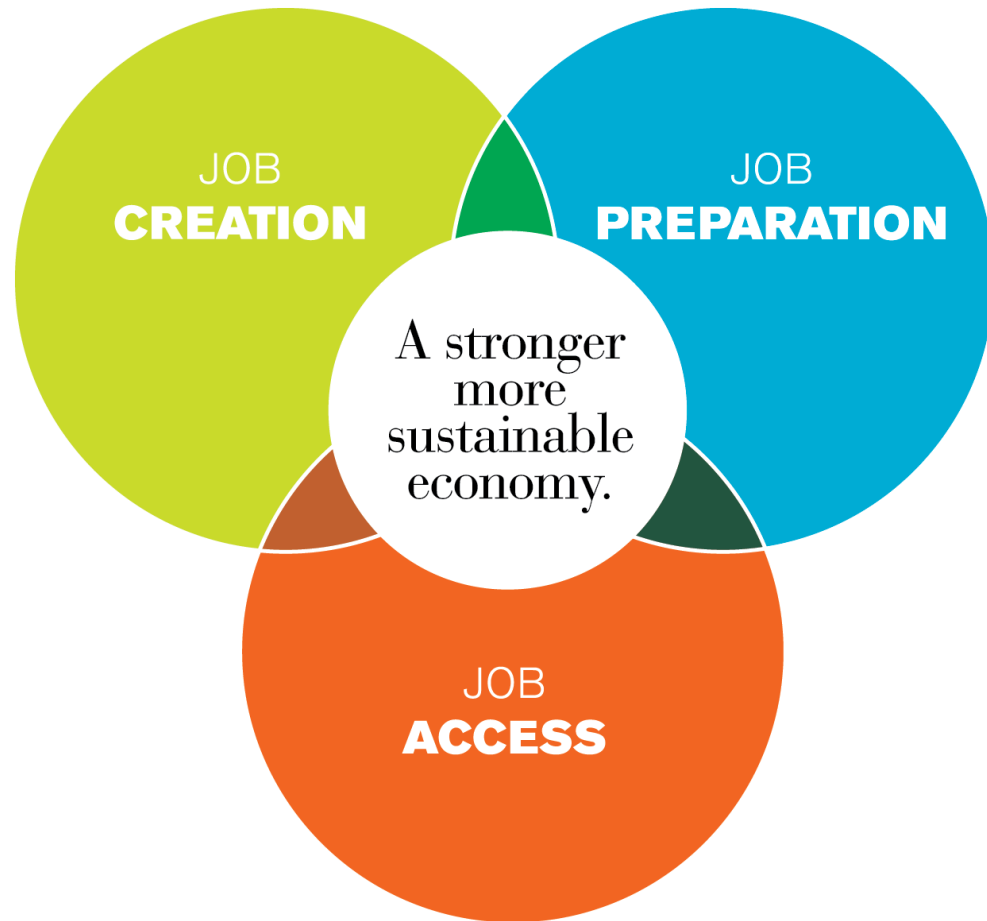
Fund For Our Economic Future



Growth & Opportunity



Job Access

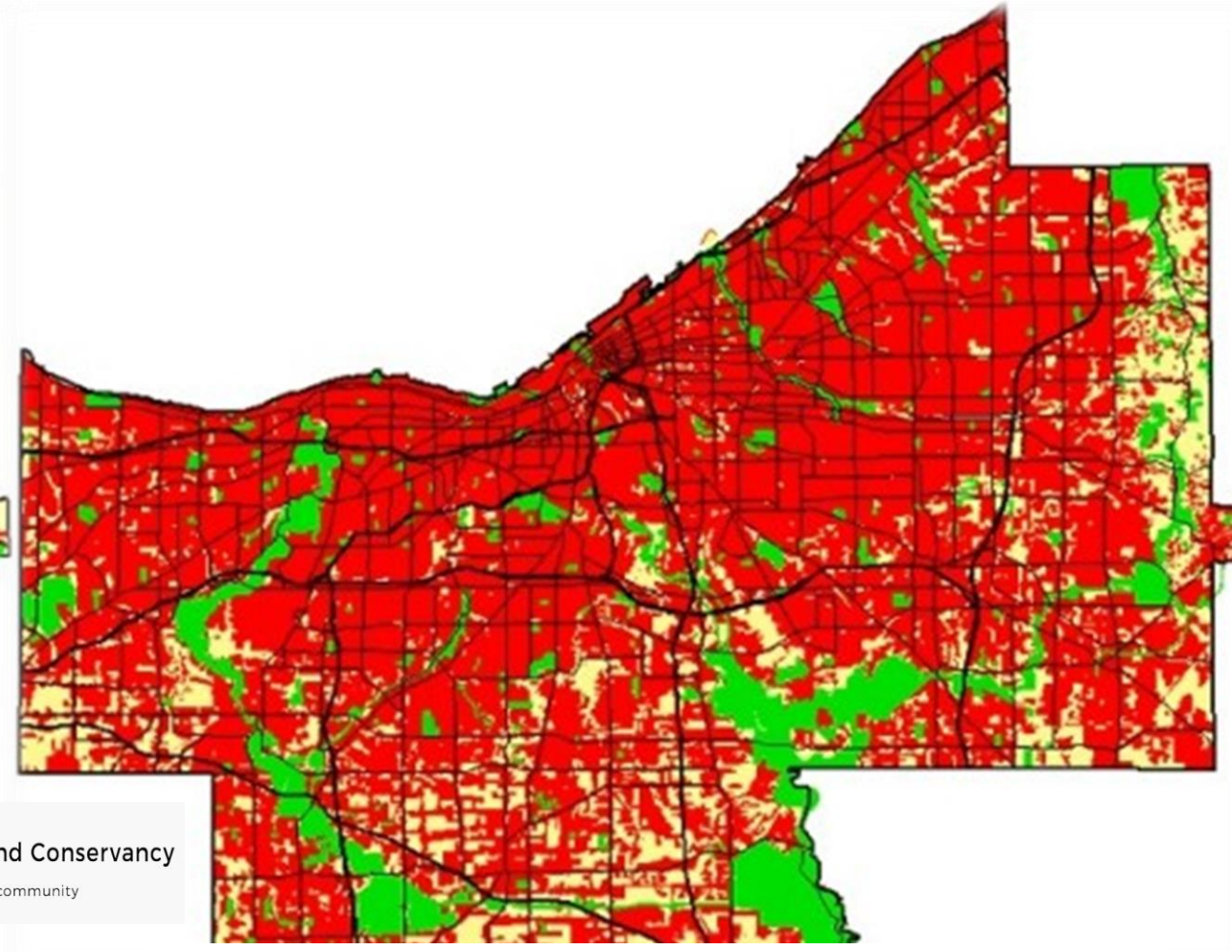
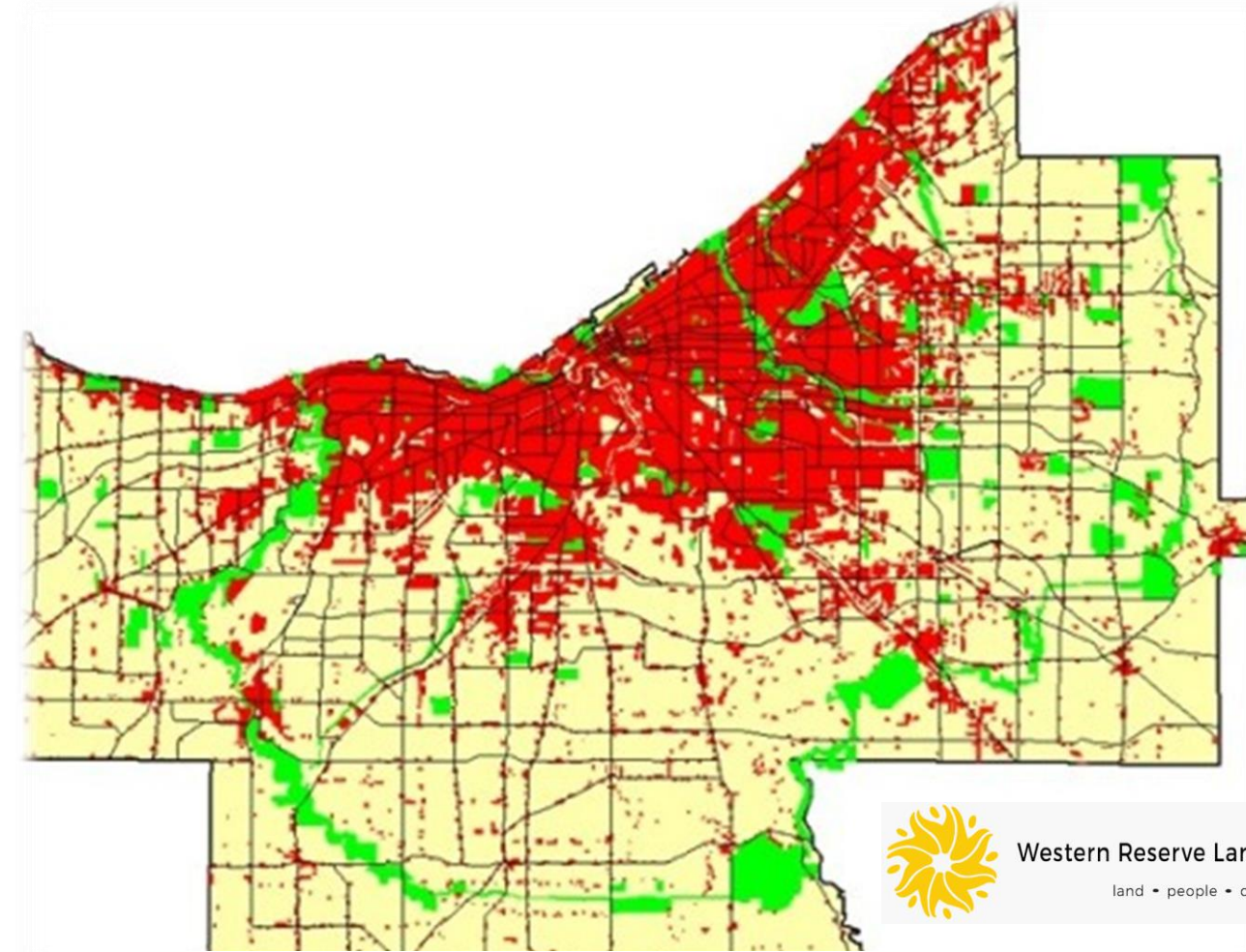


- **Jobs to People**
- **People to Jobs**



Cleveland 1950

Cleveland 2000



Western Reserve Land Conservancy
land • people • community

Population: 1.4 million

Population: 1.4 million



Municipalities



Environment



Businesses



People

CLEVELAND
20%

Housing costs as a % of income



New York
30%

Housing costs as a % of income



CLEVELAND

41%

Housing & transportation costs as a % of income



New York

39%

Housing & transportation costs as a % of income



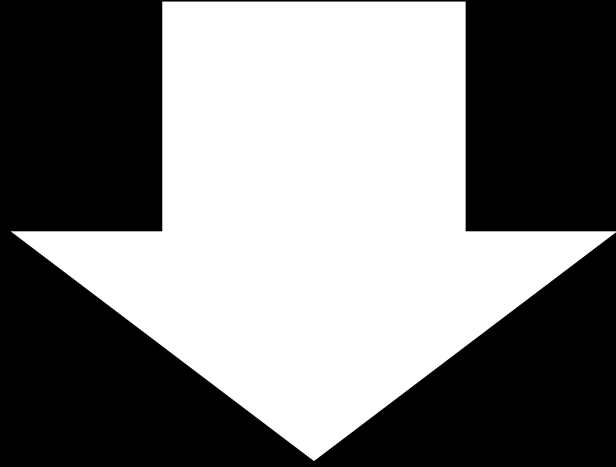


**Accessible jobs in
CLE MSA 2000-2012**

27% ↓

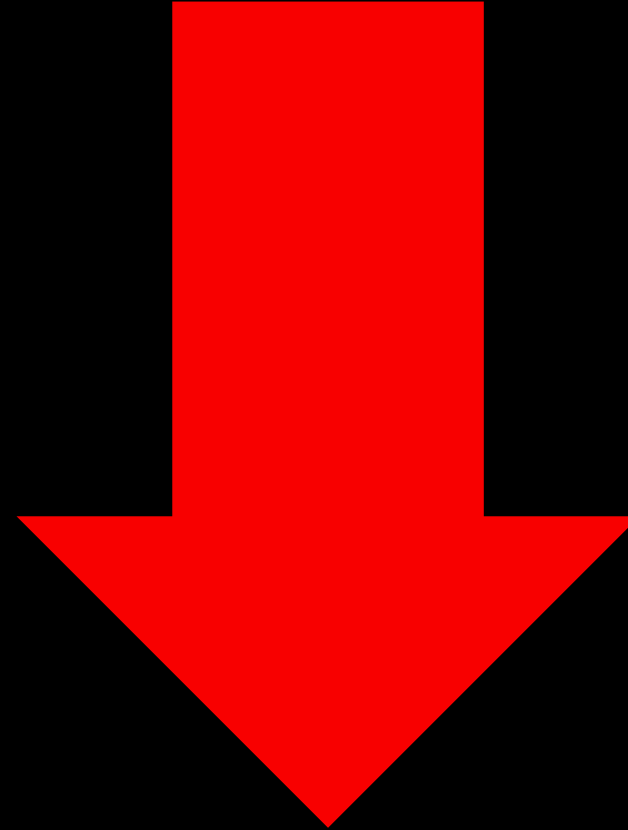
(No. 96 of 96 metros)

Accessible jobs in CLE MSA
(2000-2012)



27%

In high-poverty
neighborhoods



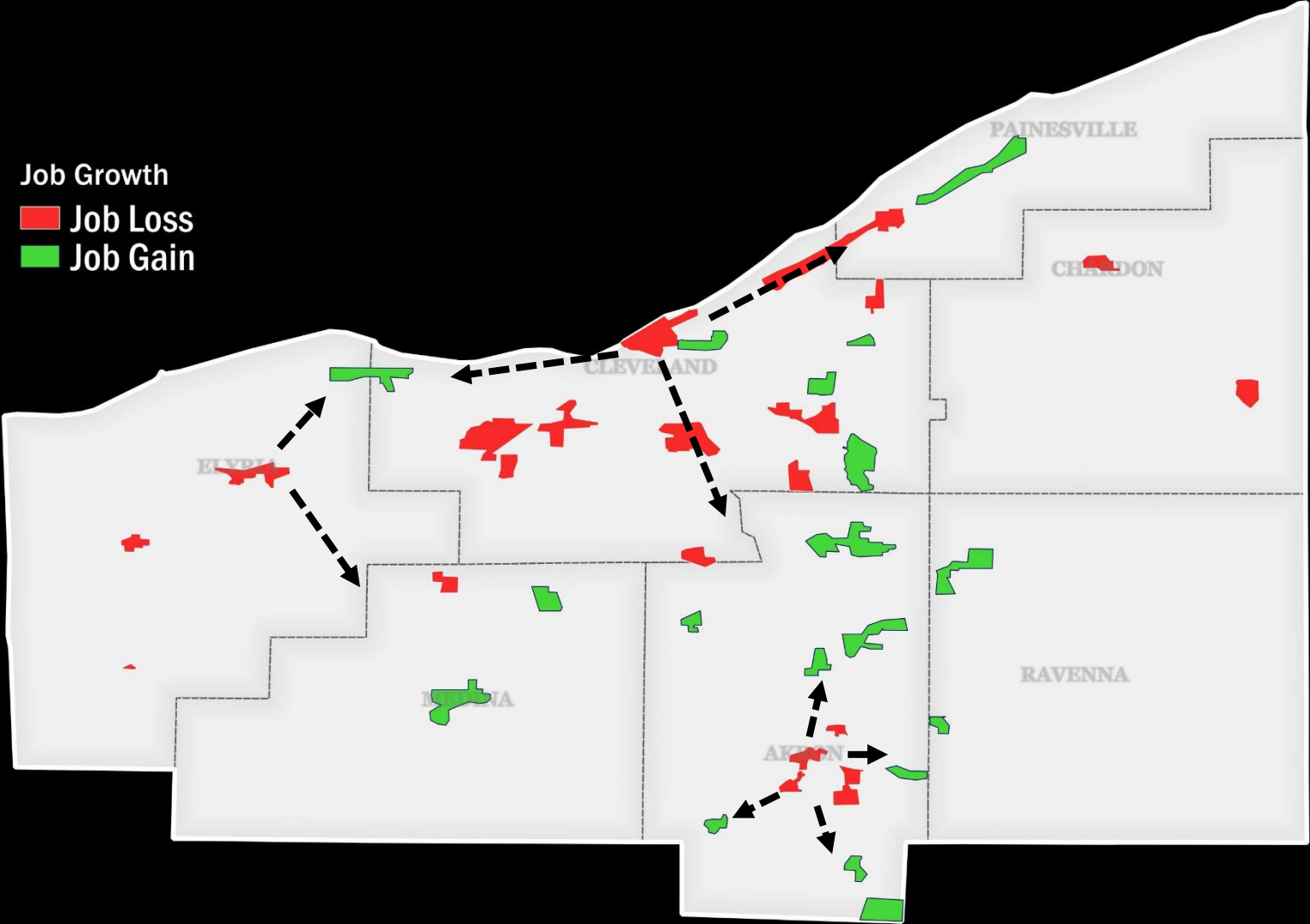
35%

A black and white photograph of a person sitting on a metal bench at a train station. The person is wearing a dark jacket, light-colored pants, and a cap. They are looking directly at the camera. In the background, a train is visible with various signs and markings, including "23240kg", "FUG 15 03 10", and "158.9". The text "56% of Central residents don't have access to a car." is overlaid in large, bold, white letters across the center of the image.

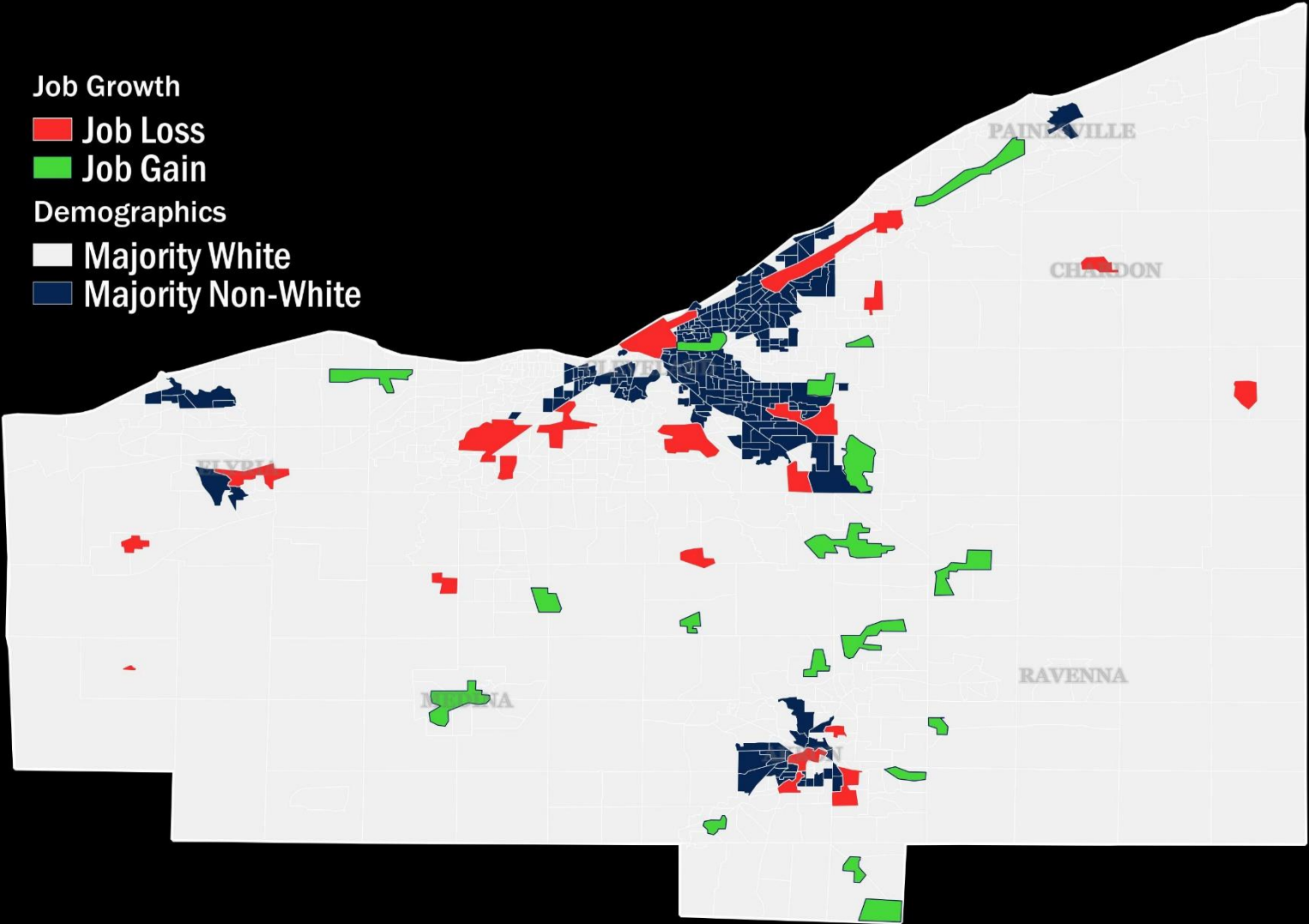
56% of Central residents don't have access to a car.

Traded Sector Job Hubs

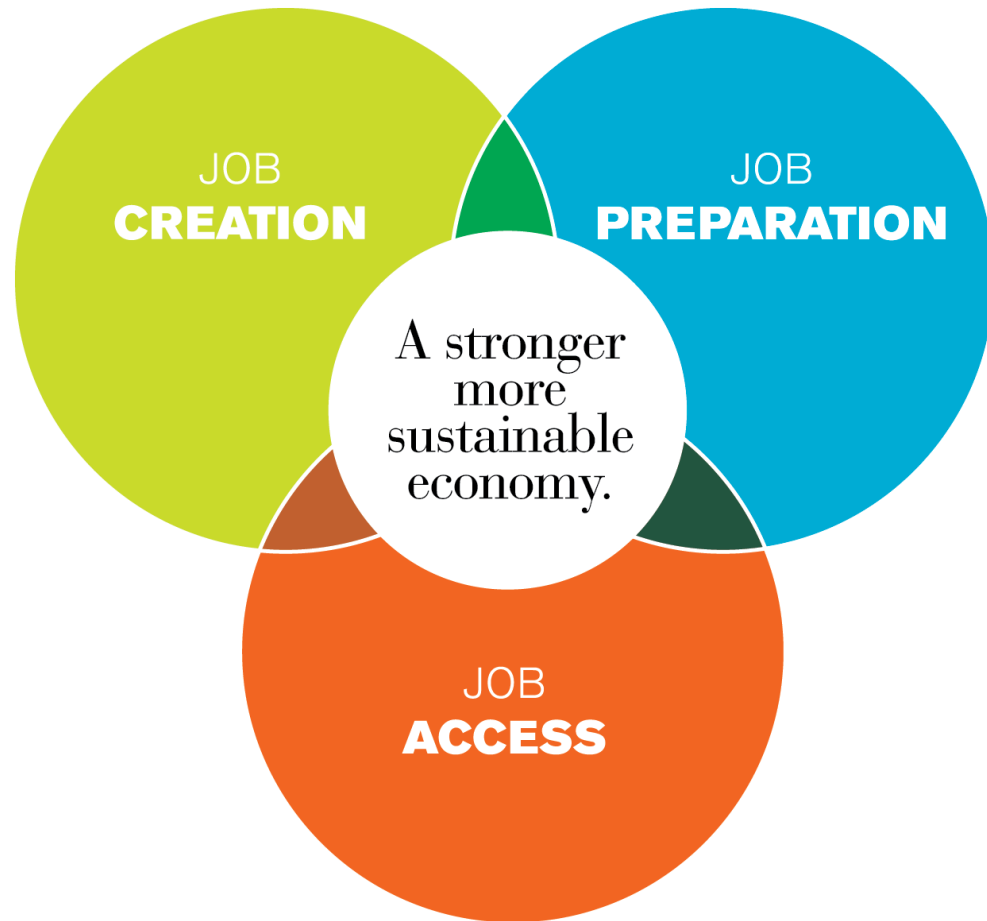
Job Growth
■ Job Loss
■ Job Gain



Traded Sector Job Growth: Far From Communities of Color



Job Access



- **Jobs to People**
- **People to Jobs**



Current growth patterns amount to distance discrimination.

**NO CAR,
NO JOB.**

**NO JOB,
NO CAR.**

FALSE

CHOICE



CAR



BUS

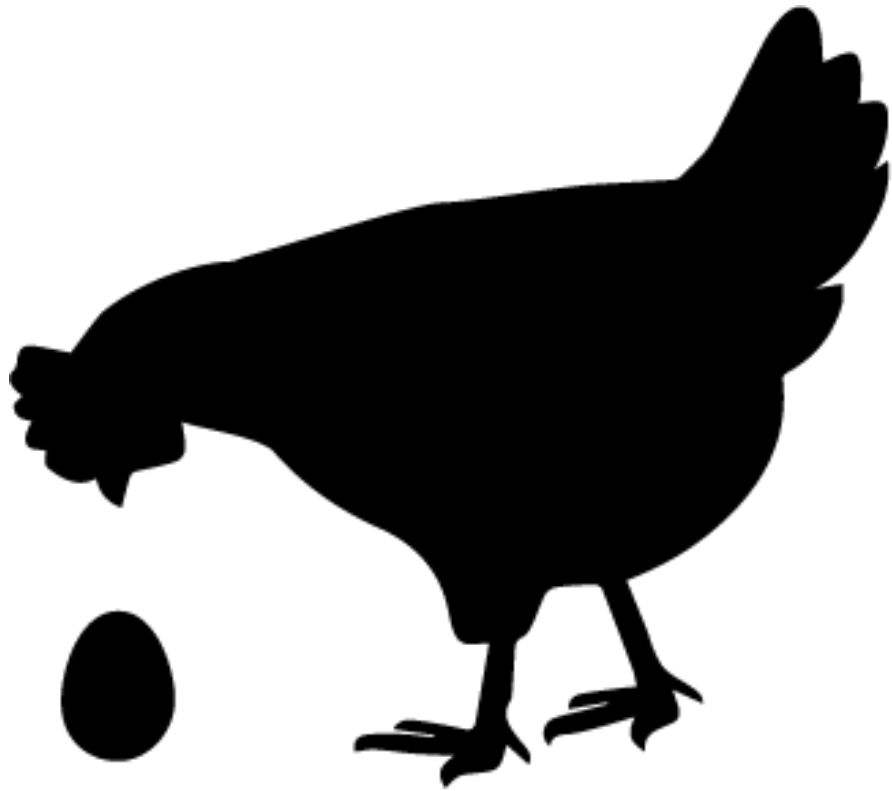
Pilot Scenarios



Illustrative Providers



*The Two
Tomorrows*
Regional priorities for
a better tomorrow.



THE PARADOX PRIZE

