

**ECONOMY**

CENTRAL BANKING  
THE CARD GAME



CENTRAL BANKING  
THE CARD GAME

**ECONOMY**

**ECONOMY**

CENTRAL BANKING  
THE CARD GAME



CENTRAL BANKING  
THE CARD GAME

**ECONOMY**

**ECONOMY**

CENTRAL BANKING  
THE CARD GAME



CENTRAL BANKING  
THE CARD GAME

**ECONOMY**

**ECONOMY**

CENTRAL BANKING  
THE CARD GAME



CENTRAL BANKING  
THE CARD GAME

**ECONOMY**

# CONSUMER CONFIDENCE UPTICK



**GDP down 0.25%**  
**IR unchanged**

# UPTICK IN CONSUMER PRODUCT SUBSTITUTES



**GDP unchanged**  
**IR down 0.25%**

# VACATION SEASON



**GDP unchanged**  
**IR unchanged**

# VACATION SEASON



**GDP unchanged**  
**IR unchanged**

**ECONOMY**

CENTRAL BANKING  
THE CARD GAME



CENTRAL BANKING  
THE CARD GAME

**ECONOMY**

**ECONOMY**

CENTRAL BANKING  
THE CARD GAME



CENTRAL BANKING  
THE CARD GAME

**ECONOMY**

**ECONOMY**

CENTRAL BANKING  
THE CARD GAME



CENTRAL BANKING  
THE CARD GAME

**ECONOMY**

**ECONOMY**

CENTRAL BANKING  
THE CARD GAME



CENTRAL BANKING  
THE CARD GAME

**ECONOMY**

## CYBERSECURITY CONCERNS



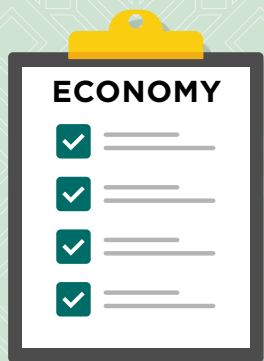
**GDP down 0.50%**  
**IR down 0.25%**

## CURRENCY TOO STRONG



**GDP down 0.75%**  
**IR unchanged**

## OPTIMISTIC ECONOMIC SURVEYS



**GDP up 0.50%**  
**IR up 0.25%**

## OIL AT HISTORIC LOWS



**GDP unchanged**  
**IR down 1.50%**



**ECONOMY**

CENTRAL BANKING  
THE CARD GAME



CENTRAL BANKING  
THE CARD GAME

**ECONOMY**

**ECONOMY**

CENTRAL BANKING  
THE CARD GAME



CENTRAL BANKING  
THE CARD GAME

**ECONOMY**

**ECONOMY**

CENTRAL BANKING  
THE CARD GAME



CENTRAL BANKING  
THE CARD GAME

**ECONOMY**

**ECONOMY**

CENTRAL BANKING  
THE CARD GAME



CENTRAL BANKING  
THE CARD GAME

**ECONOMY**

## OIL CARTEL PRODUCTION CUTS



**GDP unchanged  
IR up 1.50%**

## WEALTH EFFECT FROM STOCK MARKET GAINS



**GDP up 0.25%  
IR unchanged**

## RUMORS OF RAW MATERIALS SHORTAGE



**GDP unchanged  
IR up 0.25%**

## RUMORS OF GLOBAL RECESSION



**GDP down 0.25%  
IR down 0.50%**

**ECONOMY**

CENTRAL BANKING  
THE CARD GAME



CENTRAL BANKING  
THE CARD GAME

**ECONOMY**

**ECONOMY**

CENTRAL BANKING  
THE CARD GAME



CENTRAL BANKING  
THE CARD GAME

**ECONOMY**

**ECONOMY**

CENTRAL BANKING  
THE CARD GAME



CENTRAL BANKING  
THE CARD GAME

**ECONOMY**

**ECONOMY**

CENTRAL BANKING  
THE CARD GAME



CENTRAL BANKING  
THE CARD GAME

**ECONOMY**

# RUMORS OF GLOBAL ECONOMIC EXPANSION



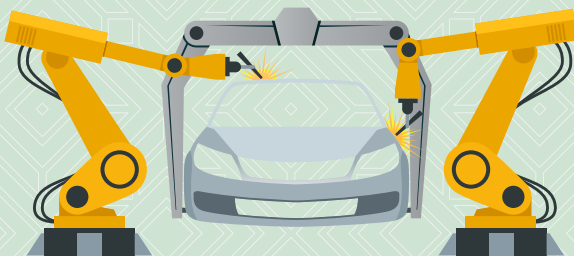
**GDP up 0.25%**  
**IR up 0.50%**

# STAGFLATION PRESSURE



**GDP down 1.25%**  
**IR unchanged**

# PRODUCTIVITY GAINS



**GDP up 1.25%**  
**IR unchanged**

# POLITICAL TURMOIL



**GDP down 1.50%**  
**IR unchanged**

**ECONOMY**

CENTRAL BANKING  
THE CARD GAME



CENTRAL BANKING  
THE CARD GAME

**ECONOMY**

**ECONOMY**

CENTRAL BANKING  
THE CARD GAME



CENTRAL BANKING  
THE CARD GAME

**ECONOMY**

**ECONOMY**

CENTRAL BANKING  
THE CARD GAME



CENTRAL BANKING  
THE CARD GAME

**ECONOMY**

**ECONOMY**

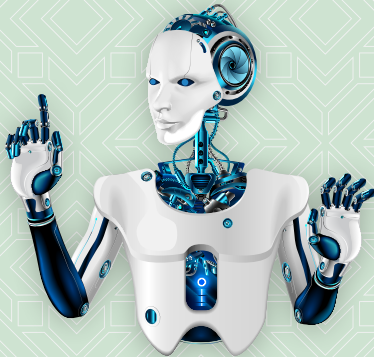
CENTRAL BANKING  
THE CARD GAME



CENTRAL BANKING  
THE CARD GAME

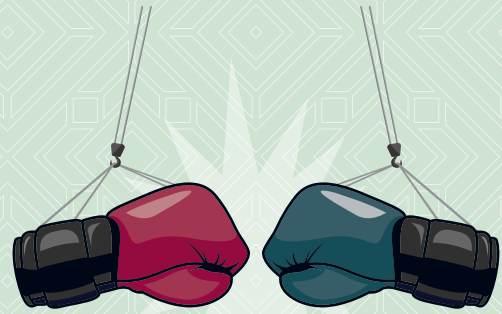
**ECONOMY**

# ARTIFICIAL INTELLIGENCE REVOLUTION



**GDP up 1.50%**  
**IR unchanged**

# TRADE WAR



**CHOOSE TWO CENTRAL BANKS TO PERFORM THIS ACTION:**

**GDP down 2.00%**  
**IR down 2.00%**

# TRADE AGREEMENT



**CHOOSE TWO CENTRAL BANKS TO PERFORM THIS ACTION:**

**GDP up 2.00%**  
**IR up 2.00%**

# GOVERNMENT FISCAL IRRESPONSIBILITY



**GDP unchanged**  
**IR up 1.25%**

**ECONOMY**

CENTRAL BANKING  
THE CARD GAME



CENTRAL BANKING  
THE CARD GAME

**ECONOMY**

**ECONOMY**

CENTRAL BANKING  
THE CARD GAME



CENTRAL BANKING  
THE CARD GAME

**ECONOMY**

**ECONOMY**

CENTRAL BANKING  
THE CARD GAME



CENTRAL BANKING  
THE CARD GAME

**ECONOMY**

**ECONOMY**

CENTRAL BANKING  
THE CARD GAME



CENTRAL BANKING  
THE CARD GAME

**ECONOMY**

# GOVERNMENT FISCAL RESPONSIBILITY



**GDP unchanged  
IR down 1.25%**

# NEW CENTRAL BANK LEADER HAS ANTI-INFLATION RECORD

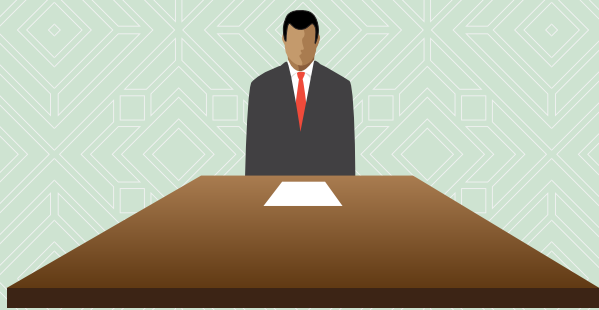
CENTRAL  BANK



**GDP unchanged  
IR down 0.75%**

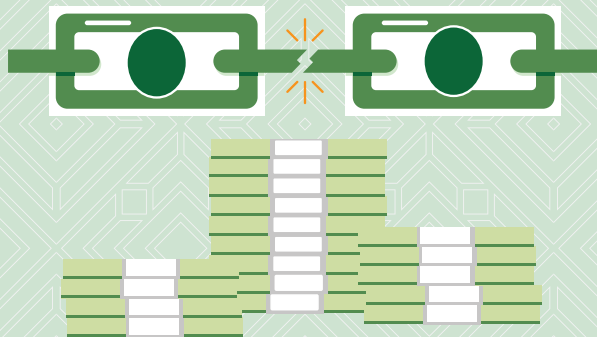
# NEW CENTRAL BANK LEADER HAS ACCOMMODATIVE HISTORY

CENTRAL  BANK



**GDP unchanged  
IR up 0.75%**

# CURRENCY TOO WEAK



**GDP up 0.75%  
IR unchanged**